

Legend

- ORT HOME
- Pole-Attached
- 1 tether
- 2 port evolv
- aerial_service_loop
- aerial drop
- BB-1
- new_strand

3-Apr-2025 REV 03

REVISIONS					
REV. NO	DATE	DESCRIPTION	BY	CHK	APR
1	2/25/25	65% Draft for Review	MK	JJ	KM
2	3/19/25	95% Draft for Review	MK	JJ	KM
3	4/4/25	Issue For Construction	MK	JJ	KM
-	-	-	-	-	-

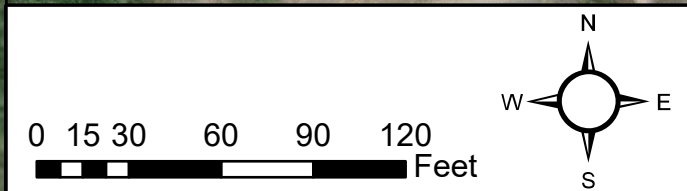
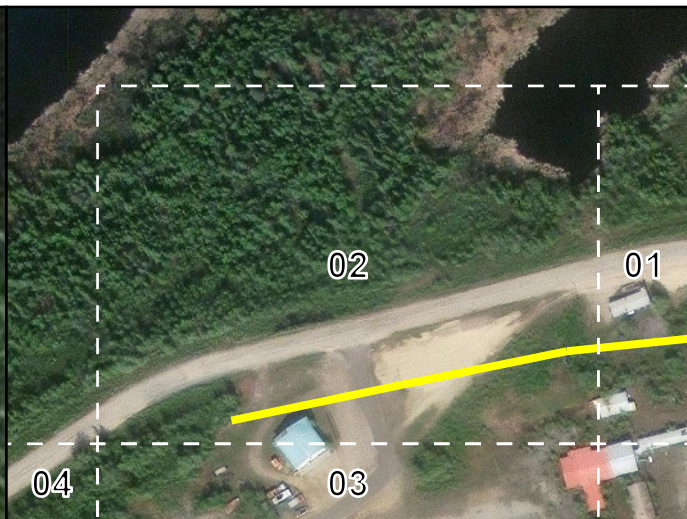
Source: Esri, Maxar, Earthstar Geographics, and the GIS User Community, Maxar

**Tanana
Chiefs
Conference**

This document contains Client & SGV International LLC confidential information which is protected by laws of confidentiality. Taking of any action related to the contents of this document, without permission or ownership, is strictly prohibited.

Project No. TCC-00001C	
SGV Document No. TCC00001_TC_NY_FACL_EFC_25CM0331	
Created By	MARKUS KOFOID
Drawn By	MARKUS KOFOID
Checked By	JEREMY JOHNSON
Approved By	KEITH MERRICK

REV. NO 3	FTTX_TCC_ORT
SIZE 11 x 17	NORTHWAY STAKING SHEETS
-	SS:1 of 29



Legend

- ORT HOME
- Pole-Attached
- 1 tether
- 2 port evolv
- aerial drop
- BB-1
- new_strand

3-Apr-2025 REV 03

REVISIONS					
REV. NO	DATE	DESCRIPTION	BY	CHK	APR
1	2/25/25	65% Draft for Review	MK	JJ	KM
2	3/19/25	95% Draft for Review	MK	JJ	KM
3	4/4/25	Issue For Construction	MK	JJ	KM
-	-	-	-	-	-

Source: Esri, Maxar, Earthstar Geographics, and the GIS User Community, Maxar

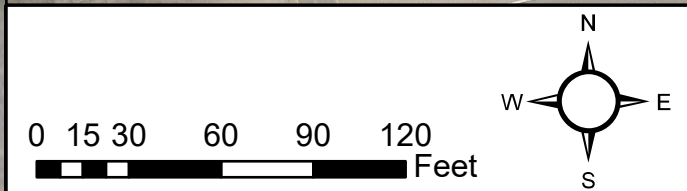
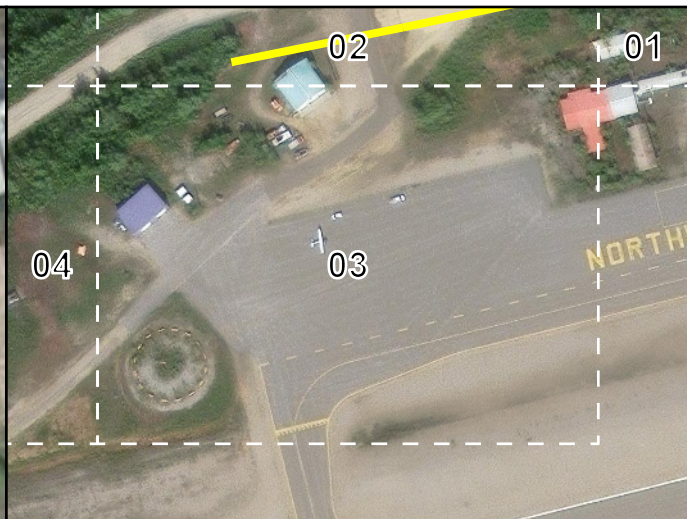
This document contains Client & SGV International LLC confidential information which is protected by laws of confidentiality. Taking of any action related to the contents of this document, without permission or ownership, is strictly prohibited.

Project No. TCC-00001C

SGV Document No. TCC00001_TC_NY_FACL_EFC_25CM0331

Created By	MARKUS KOFOID	DATE	4/1/25
Drawn By	MARKUS KOFOID	DATE	4/1/25
Checked By	JEREMY JOHNSON	DATE	4/2/25
Approved By	KEITH MERRICK	DATE	4/3/25

REV. NO	3	FTTX_TCC_ORT
SIZE	11 x 17	
NORTHWAY		SS:2 of 29
STAKING SHEETS		



Legend

- ORT HOME
- Pole-Drop
- aerial drop

3-Apr-2025 REV 03

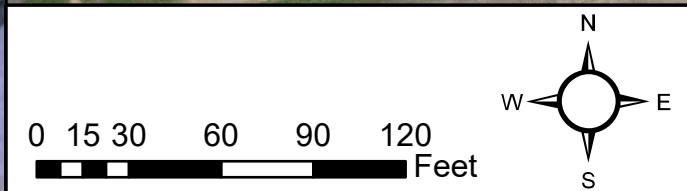
REVISIONS					
REV. NO	DATE	DESCRIPTION	BY	CHK	APR
1	2/25/25	65% Draft for Review	MK	JJ	KM
2	3/19/25	95% Draft for Review	MK	JJ	KM
3	4/4/25	Issue For Construction	MK	JJ	KM
-	-	-	-	-	-

Source: Esri, Maxar, Earthstar Geographics, and the GIS User Community, Maxar

This document contains Client & SGV International LLC confidential information which is protected by laws of confidentiality. Taking of any action related to the contents of this document, without permission or ownership, is strictly prohibited.

Project No. TCC-00001C
 SGV Document No. TCC00001_TC_NY_FACL_EFC_25CM0331
 Created By MARKUS KOFOID DATE 4/1/25
 Drawn By MARKUS KOFOID DATE 4/1/25
 Checked By JEREMY JOHNSON DATE 4/2/25
 Approved By KEITH MERRICK DATE 4/3/25

REV. NO 3	FTTX_TCC_ORT
SIZE 11 x 17	NORTHWAY STAKING SHEETS
-	SS:3 of 29



Legend

- ORT HOME
- Pole-Drop
- aerial drop

3-Apr-2025 REV 03

REVISIONS					
REV. NO	DATE	DESCRIPTION	BY	CHK	APR
1	2/25/25	65% Draft for Review	MK	JJ	KM
2	3/19/25	95% Draft for Review	MK	JJ	KM
3	4/4/25	Issue For Construction	MK	JJ	KM
-	-	-	-	-	-

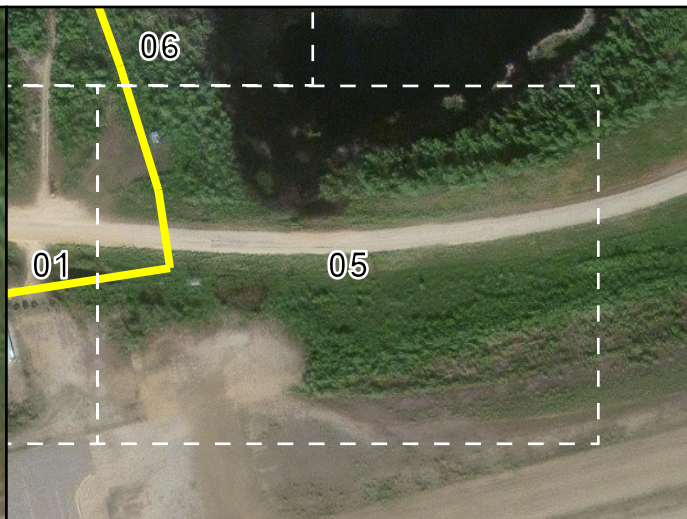
Source: Esri, Maxar, Earthstar Geographics, and the GIS User Community

Tanana
Chiefs
Conference

This document contains Client & SGV International LLC confidential information which is protected by laws of confidentiality. Taking of any action related to the contents of this document, without permission or ownership, is strictly prohibited.

Project No. TCC-00001C
 SGV Document No. TCC00001_TC_NY_FACL_EFC_25CM0331
 Created By MARKUS KOFOID
 Drawn By MARKUS KOFOID
 Checked By JEREMY JOHNSON
 Approved By KEITH MERRICK

REV. NO 3	FTTX_TCC_ORT
SIZE 11 x 17	NORTHWAY STAKING SHEETS
-	SS:4 of 29



Legend

- Pole-Attached
- 4 4 tether
- S splice
- ↔ aerial_service_loop
- BB-1
- BB-5
- new_strand

3-Apr-2025 REV 03

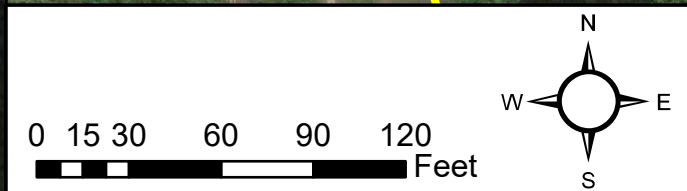
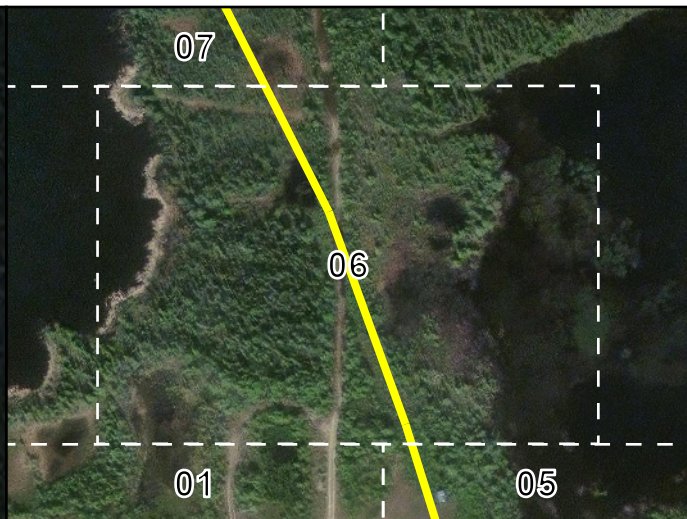
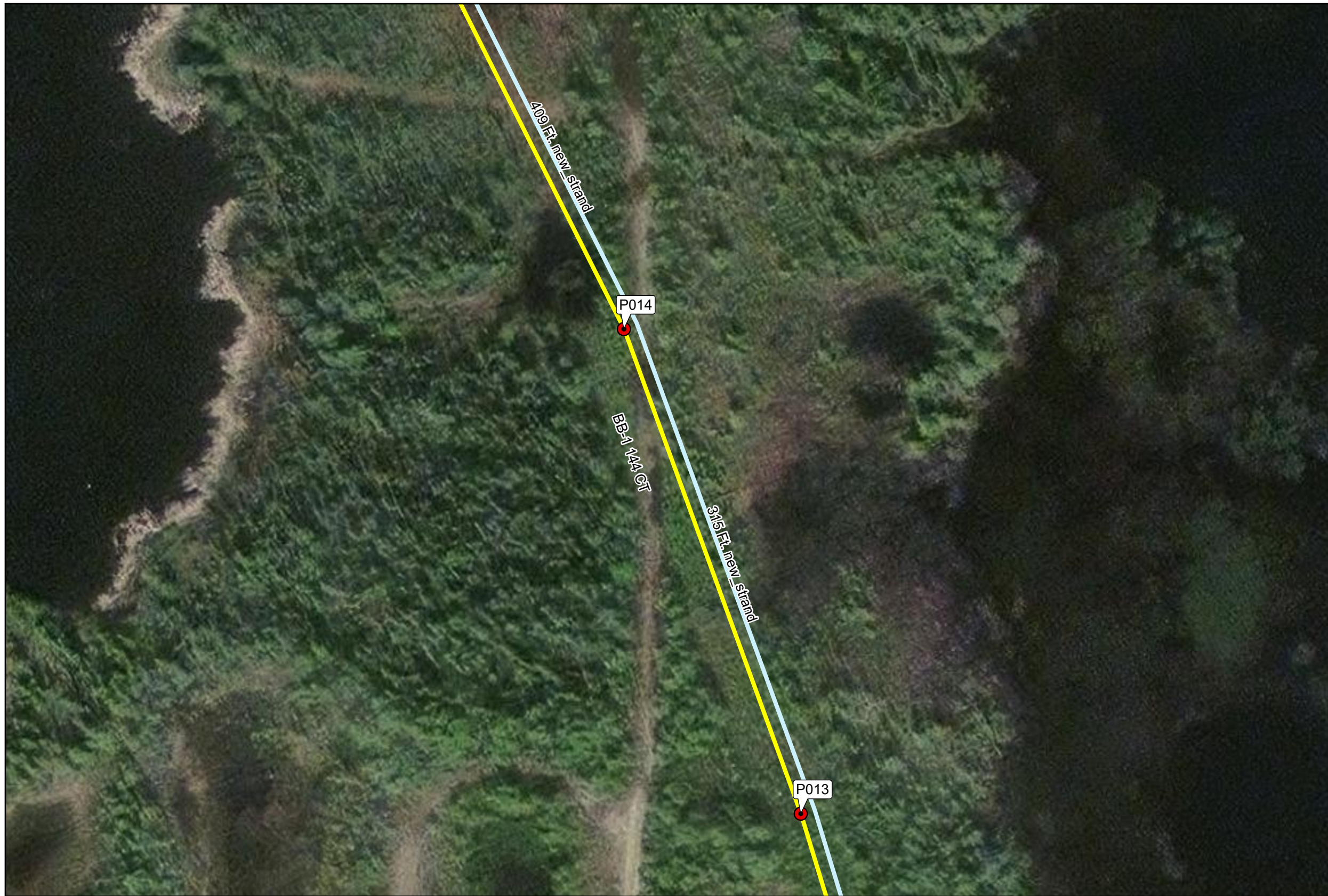
REVISIONS					
REV. NO	DATE	DESCRIPTION	BY	CHK	APR
1	2/25/25	65% Draft for Review	MK	JJ	KM
2	3/19/25	95% Draft for Review	MK	JJ	KM
3	4/4/25	Issue For Construction	MK	JJ	KM
-	-	-	-	-	-

Source: Esri, Maxar, Earthstar Geographics, and the GIS User Community, Maxar

This document contains Client & SGV International LLC confidential information which is protected by laws of confidentiality. Taking of any action related to the contents of this document, without permission or ownership, is strictly prohibited.

Project No. TCC-00001C	REV. NO <b style="color: red;">3
SGV Document No. TCC00001_TC_NY_FACL_EFC_25CM0331	SIZE 11 x 17
Created By MARKUS KOFOID	DATE 4/1/25
Drawn By MARKUS KOFOID	DATE 4/1/25
Checked By JEREMY JOHNSON	DATE 4/2/25
Approved By KEITH MERRICK	DATE 4/3/25

FTTX_TCC_ORT	
NORTHWAY STAKING SHEETS	
-	SS:5 of 29



Legend

- Pole-Attached
- BB-1
- new_strand

3-Apr-2025 REV 03

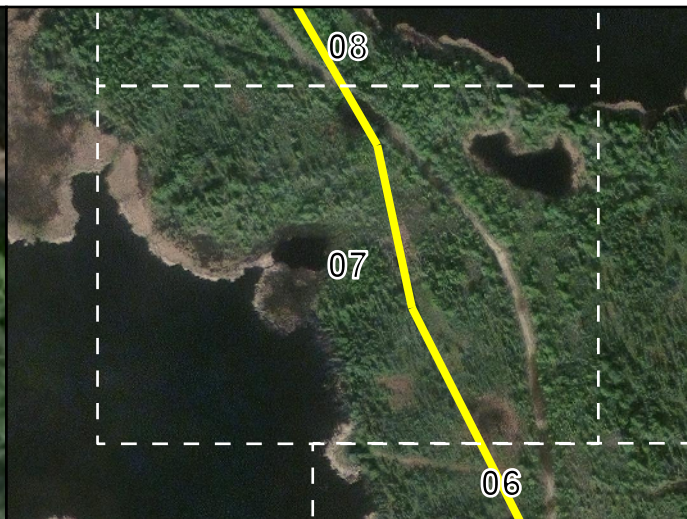
REVISIONS					
REV. NO	DATE	DESCRIPTION	BY	CHK	APR
1	2/25/25	65% Draft for Review	MK	JJ	KM
2	3/19/25	95% Draft for Review	MK	JJ	KM
3	4/4/25	Issue For Construction	MK	JJ	KM
-	-	-	-	-	-

Source: Esri, Maxar, Earthstar Geographics, and the GIS User Community, Maxar

This document contains Client & SGV International LLC confidential information which is protected by laws of confidentiality. Taking of any action related to the contents of this document, without permission or ownership, is strictly prohibited.

Project No. TCC-00001C	
SGV Document No. TCC00001_TC_NY_FACL_EFC_25CM0331	
Created By	MARKUS KOFOID
Drawn By	MARKUS KOFOID
Checked By	JEREMY JOHNSON
Approved By	KEITH MERRICK

REV. NO	3
SIZE	11 x 17
FTTX_TCC_ORT	
NORTHWAY STAKING SHEETS	
-	SS:6 of 29



Legend

- Pole-Attached
- aerial_service_loop
- BB-1
- new_strand

3-Apr-2025 REV 03

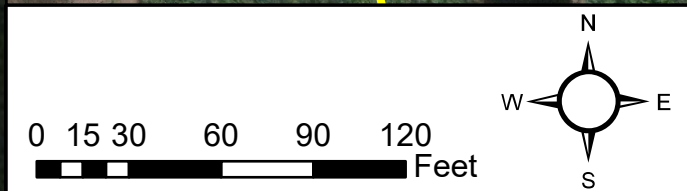
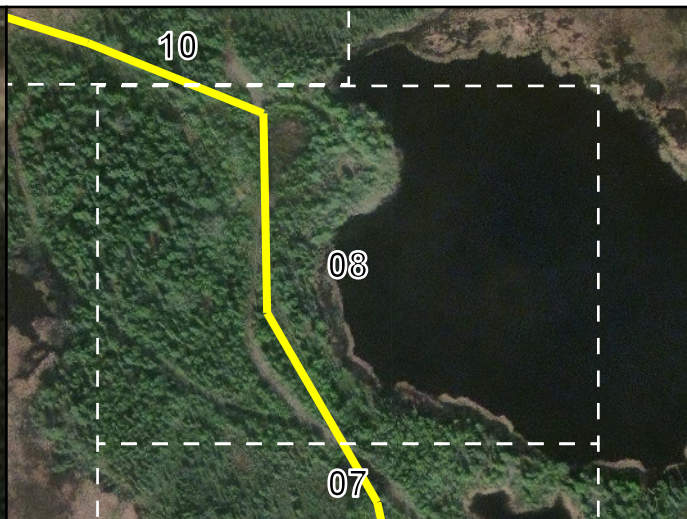
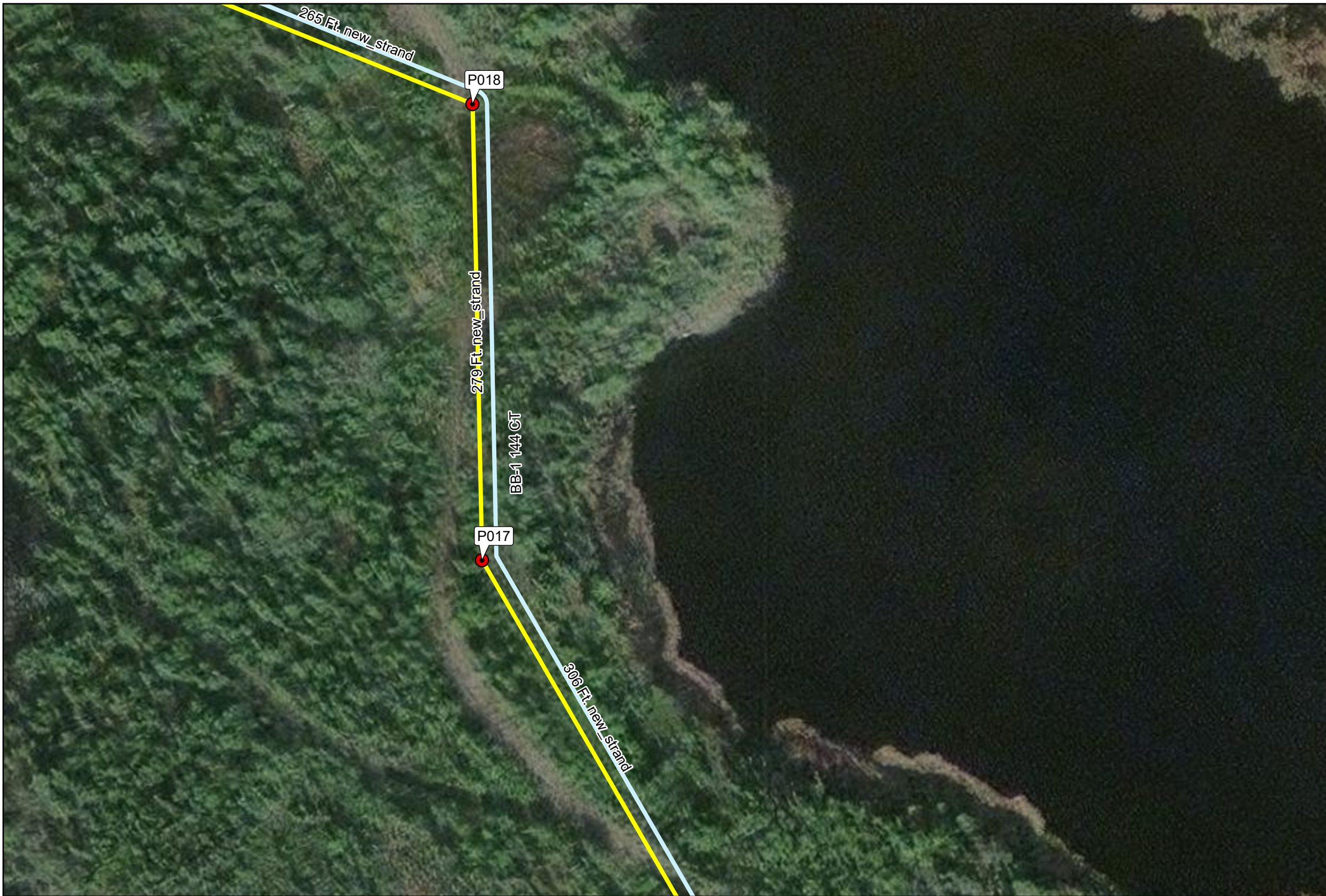
REVISIONS					
REV. NO	DATE	DESCRIPTION	BY	CHK	APR
1	2/25/25	65% Draft for Review	MK	JJ	KM
2	3/19/25	95% Draft for Review	MK	JJ	KM
3	4/4/25	Issue For Construction	MK	JJ	KM
-	-	-	-	-	-

Source: Esri, Maxar, Earthstar Geographics, and the GIS User Community, Maxar

This document contains Client & SGV International LLC confidential information which is protected by laws of confidentiality. Taking of any action related to the contents of this document, without permission or ownership, is strictly prohibited.

Project No. TCC-00001C
 SGV Document No. TCC00001_TC_NY_FACL_EFC_25CM0331
 Created By MARKUS KOFOID DATE 4/1/25
 Drawn By MARKUS KOFOID DATE 4/1/25
 Checked By JEREMY JOHNSON DATE 4/2/25
 Approved By KEITH MERRICK DATE 4/3/25

REV. NO 3	FTTX_TCC_ORT
SIZE 11 x 17	NORTHWAY STAKING SHEETS
-	SS:7 of 29



Legend

- Pole-Attached
- BB-1
- new_strand

3-Apr-2025 REV 03

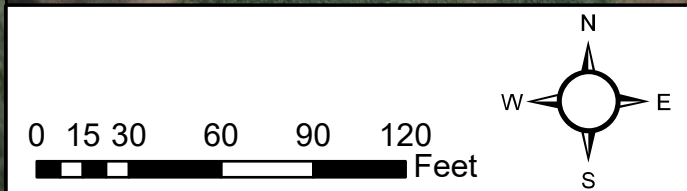
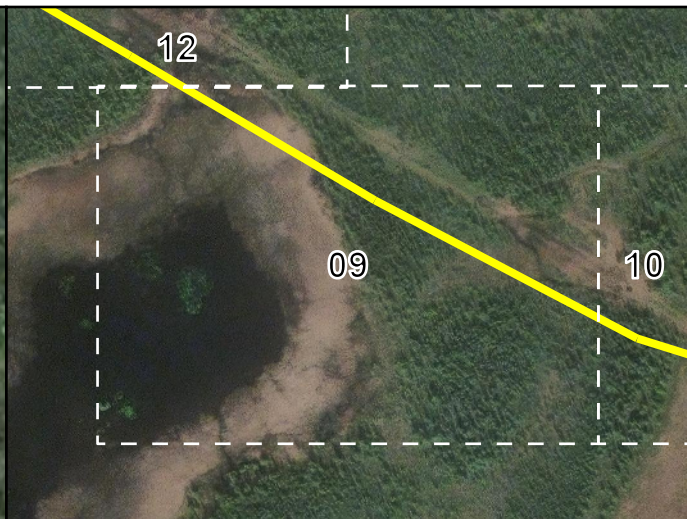
REVISIONS					
REV. NO	DATE	DESCRIPTION	BY	CHK	APR
1	2/25/25	65% Draft for Review	MK	JJ	KM
2	3/19/25	95% Draft for Review	MK	JJ	KM
3	4/4/25	Issue For Construction	MK	JJ	KM
-	-	-	-	-	-

Source: Esri, Maxar, Earthstar Geographics, and the GIS User Community, Maxar

This document contains Client & SGV International LLC confidential information which is protected by laws of confidentiality. Taking of any action related to the contents of this document, without permission or ownership, is strictly prohibited.

Project No. TCC-00001C
 SGV Document No. TCC00001_TC_NY_FACL_EFC_25CM0331
 Created By MARKUS KOFOID DATE 4/1/25
 Drawn By MARKUS KOFOID DATE 4/1/25
 Checked By JEREMY JOHNSON DATE 4/2/25
 Approved By KEITH MERRICK DATE 4/3/25

REV. NO	3	FTTX_TCC_ORT
SIZE	11 x 17	NORTHWAY STAKING SHEETS
		SS:8 of 29



Legend

- Parcel
- Pole-Attached
- ↔ aerial_service_loop
- BB-1
- new_strand



REVISIONS					
REV. NO	DATE	DESCRIPTION	BY	CHK	APR
1	2/25/25	65% Draft for Review	MK	JJ	KM
2	3/19/25	95% Draft for Review	MK	JJ	KM
3	4/4/25	Issue For Construction	MK	JJ	KM
-	-	-	-	-	-

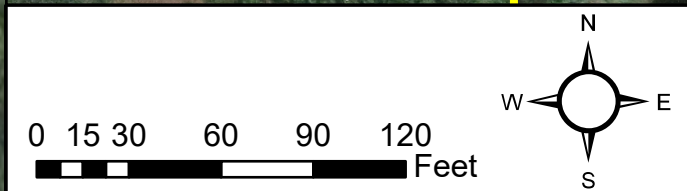
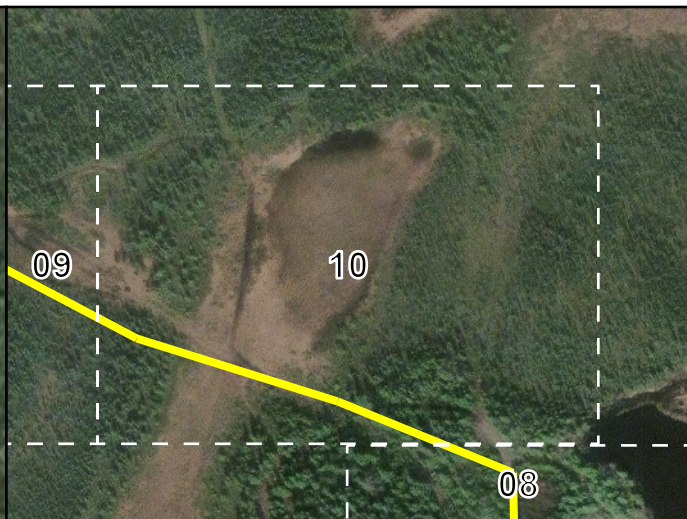
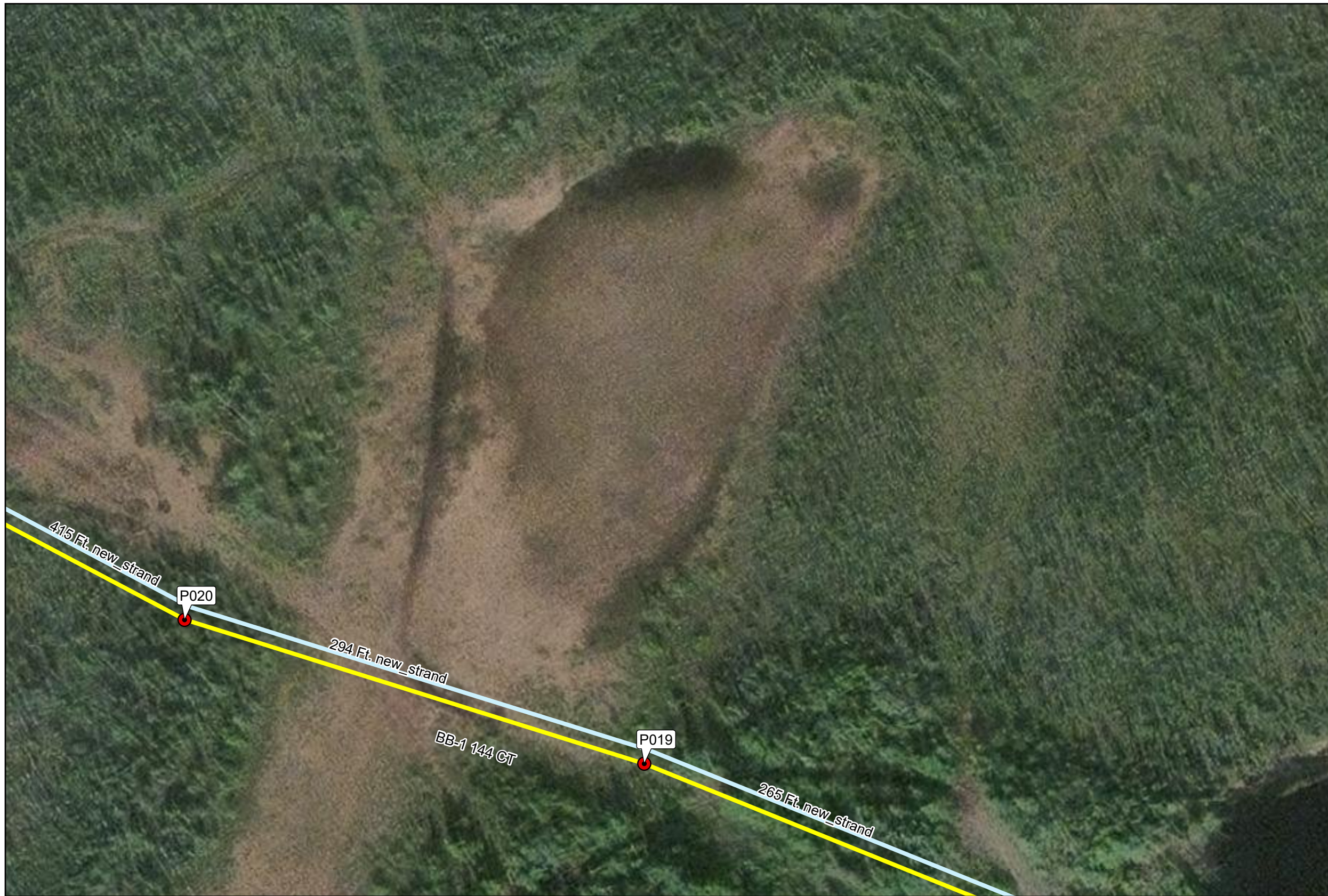
Source: Esri, Maxar, Earthstar Geographics, and the GIS User Community, Maxar

Tanana
Chiefs
Conference

This document contains Client & SGV International LLC confidential information which is protected by laws of confidentiality. Taking of any action related to the contents of this document, without permission or ownership, is strictly prohibited.

Project No. TCC-00001C	REV. NO <b style="color: red;">3
SGV Document No. TCC00001_TC_NY_FACL_EFC_25CM0331	SIZE 11 x 17
Created By MARKUS KOFOID	DATE 4/1/25
Drawn By MARKUS KOFOID	DATE 4/1/25
Checked By JEREMY JOHNSON	DATE 4/2/25
Approved By KEITH MERRICK	DATE 4/3/25

FTTX_TCC_ORT	
NORTHWAY STAKING SHEETS	
-	SS:9 of 29



Legend

- Pole-Attached
- BB-1
- new_strand

3-Apr-2025 REV 03

REVISIONS					
REV. NO	DATE	DESCRIPTION	BY	CHK	APR
1	2/25/25	65% Draft for Review	MK	JJ	KM
2	3/19/25	95% Draft for Review	MK	JJ	KM
3	4/4/25	Issue For Construction	MK	JJ	KM
-	-	-	-	-	-

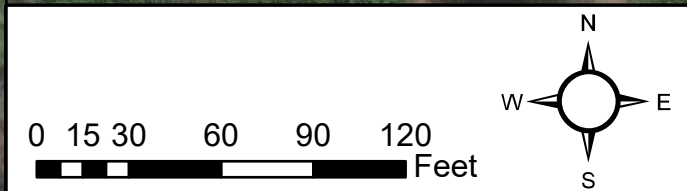
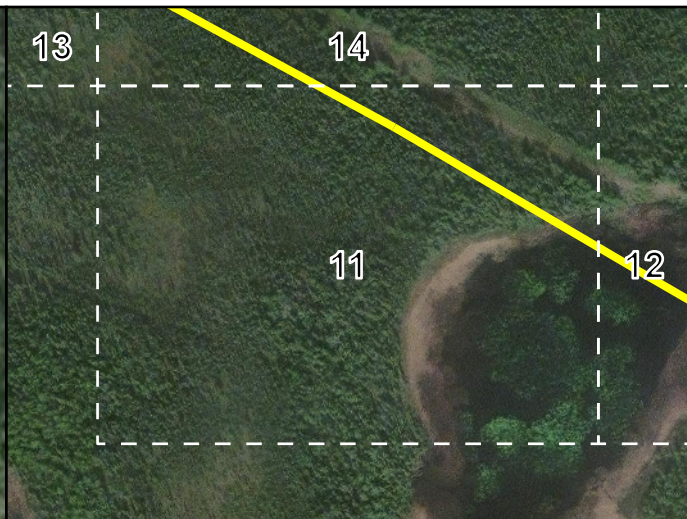
Source: Esri, Maxar, Earthstar Geographics, and the GIS User Community, Maxar

**Tanana
Chiefs
Conference**

This document contains Client & SGV International LLC confidential information which is protected by laws of confidentiality. Taking of any action related to the contents of this document, without permission or ownership, is strictly prohibited.

Project No. TCC-00001C
 SGV Document No. TCC00001_TC_NY_FACL_EFC_25CM0331
 Created By MARKUS KOFOID
 Drawn By MARKUS KOFOID
 Checked By JEREMY JOHNSON
 Approved By KEITH MERRICK

REV. NO 3	FTTX_TCC_ORT
SIZE 11 x 17	NORTHWAY STAKING SHEETS
-	SS:10 of 29



Legend

- Pole-Attached
- BB-1
- new_strand

3-Apr-2025 REV 03

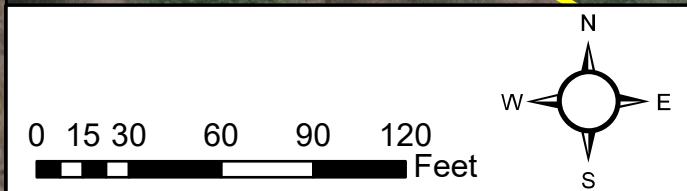
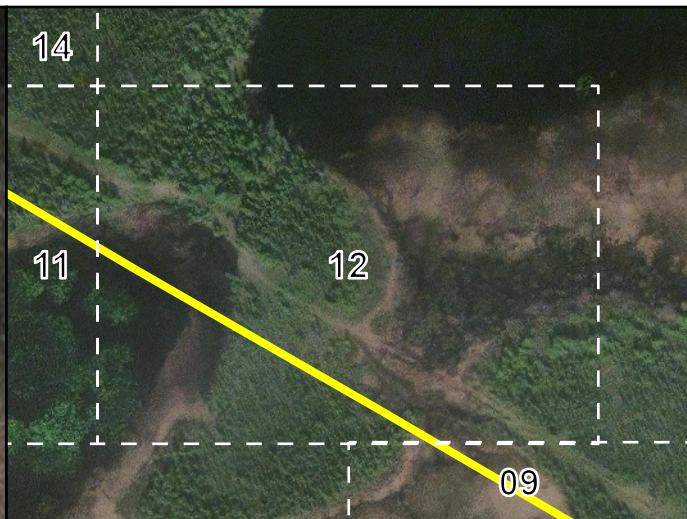
REVISIONS					
REV. NO	DATE	DESCRIPTION	BY	CHK	APR
1	2/25/25	65% Draft for Review	MK	JJ	KM
2	3/19/25	95% Draft for Review	MK	JJ	KM
3	4/4/25	Issue For Construction	MK	JJ	KM
-	-	-	-	-	-

Source: Esri, Maxar, Earthstar Geographics, and the GIS User Community, Maxar

This document contains Client & SGV International LLC confidential information which is protected by laws of confidentiality. Taking of any action related to the contents of this document, without permission or ownership, is strictly prohibited.

Project No. TCC-00001C	REV. NO 3
SGV Document No. TCC00001_TC_NY_FACL_EFC_25CM0331	SIZE 11 x 17
Created By MARKUS KOFOID	DATE 4/1/25
Drawn By MARKUS KOFOID	DATE 4/1/25
Checked By JEREMY JOHNSON	DATE 4/2/25
Approved By KEITH MERRICK	DATE 4/3/25

FTTX_TCC_ORT	
NORTHWAY STAKING SHEETS	
-	SS:11 of 29



Legend

- Parcel
- Pole-Attached
- BB-1
- new_strand

3-Apr-2025 REV 03

REVISIONS					
REV. NO	DATE	DESCRIPTION	BY	CHK	APR
1	2/25/25	65% Draft for Review	MK	JJ	KM
2	3/19/25	95% Draft for Review	MK	JJ	KM
3	4/4/25	Issue For Construction	MK	JJ	KM
-	-	-	-	-	-

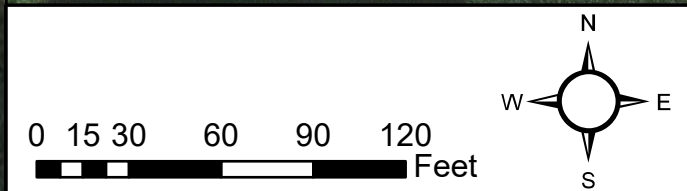
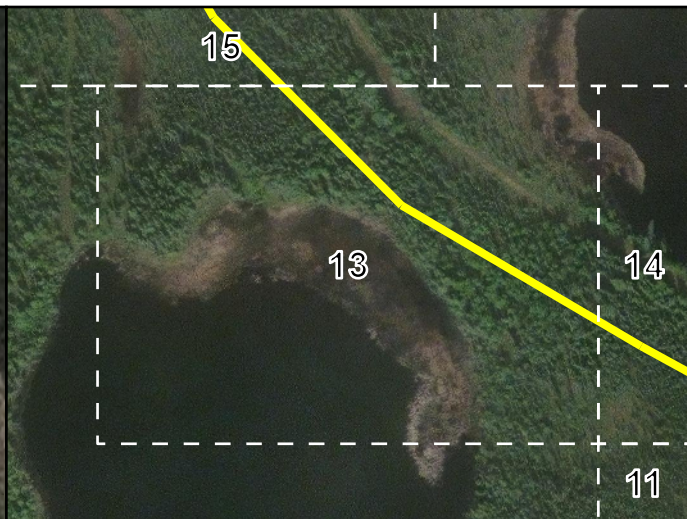
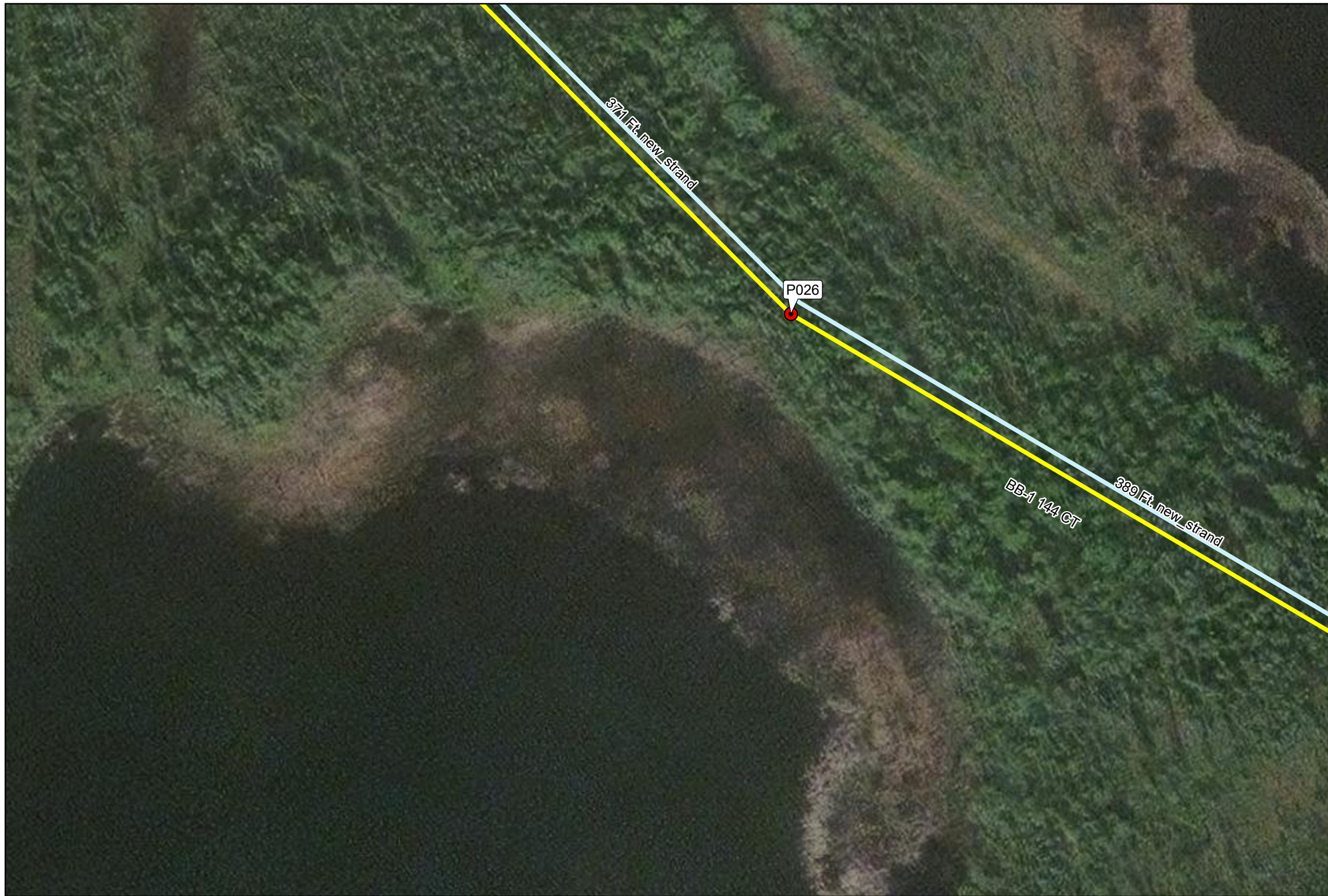
Source: Esri, Maxar, Earthstar Geographics, and the GIS User Community, Maxar

**Tanana
Chiefs
Conference**

This document contains Client & SGV International LLC confidential information which is protected by laws of confidentiality. Taking of any action related to the contents of this document, without permission or ownership, is strictly prohibited.

Project No. TCC-00001C	REV. NO 3
SGV Document No. TCC00001_TC_NY_FACL_EFC_25CM0331	SIZE 11 x 17
Created By MARKUS KOFOID	DATE 4/1/25
Drawn By MARKUS KOFOID	DATE 4/1/25
Checked By JEREMY JOHNSON	DATE 4/2/25
Approved By KEITH MERRICK	DATE 4/3/25

FTTX_TCC_ORT	
NORTHWAY STAKING SHEETS	
-	SS:12 of 29



Legend

- Pole-Attached
- BB-1
- new_strand

3-Apr-2025 REV 03

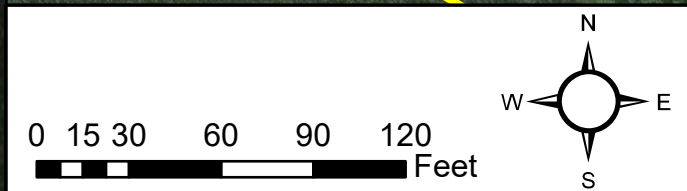
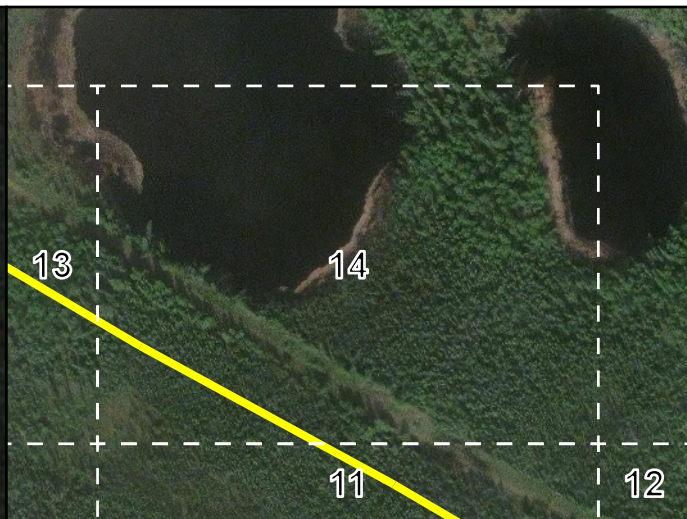
REVISIONS					
REV. NO	DATE	DESCRIPTION	BY	CHK	APR
1	2/25/25	65% Draft for Review	MK	JJ	KM
2	3/19/25	95% Draft for Review	MK	JJ	KM
3	4/4/25	Issue For Construction	MK	JJ	KM
-	-	-	-	-	-

Source: Esri, Maxar, Earthstar Geographics, and the GIS User Community, Maxar

This document contains Client & SGV International LLC confidential information which is protected by laws of confidentiality. Taking of any action related to the contents of this document, without permission or ownership, is strictly prohibited.

Project No. TCC-00001C
 SGV Document No. TCC00001_TC_NY_FACL_EFC_25CM0331
 Created By MARKUS KOFOID DATE 4/1/25
 Drawn By MARKUS KOFOID DATE 4/1/25
 Checked By JEREMY JOHNSON DATE 4/2/25
 Approved By KEITH MERRICK DATE 4/3/25

REV. NO 3	FTTX_TCC_ORT
SIZE 11 x 17	NORTHWAY STAKING SHEETS
-	SS:13 of 29



Legend

- Pole-Attached
- BB-1
- new_strand

3-Apr-2025 REV 03

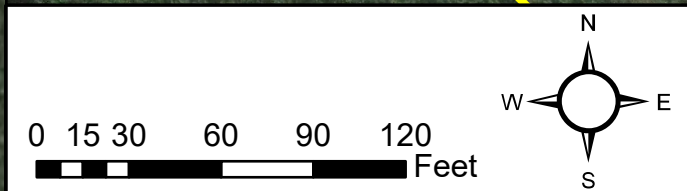
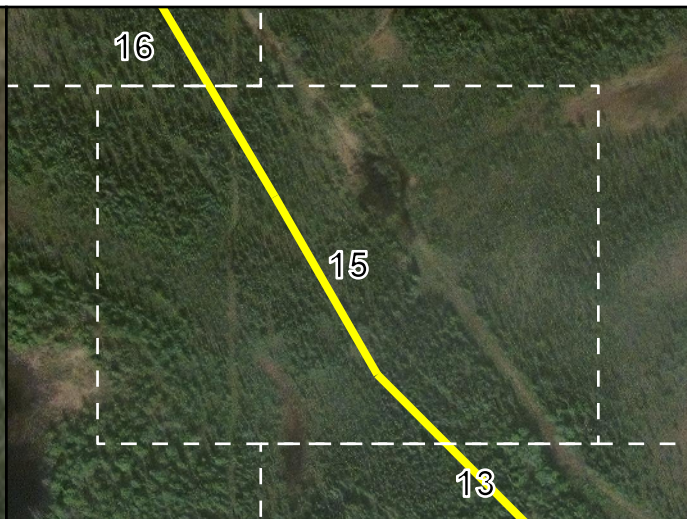
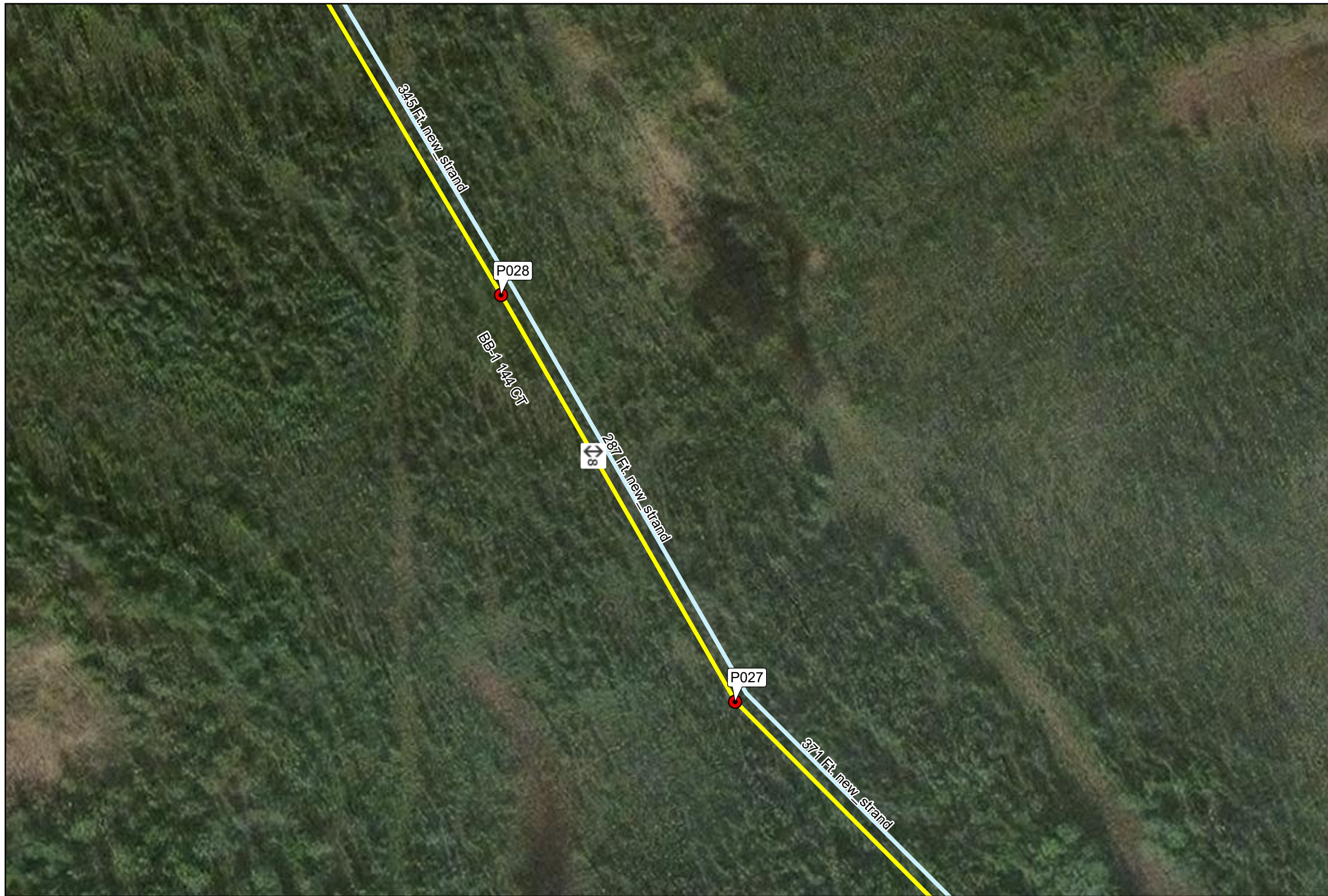
REVISIONS					
REV. NO	DATE	DESCRIPTION	BY	CHK	APR
1	2/25/25	65% Draft for Review	MK	JJ	KM
2	3/19/25	95% Draft for Review	MK	JJ	KM
3	4/4/25	Issue For Construction	MK	JJ	KM
-	-	-	-	-	-

Source: Esri, Maxar, Earthstar Geographics, and the GIS User Community, Maxar

This document contains Client & SGV International LLC confidential information which is protected by laws of confidentiality. Taking of any action related to the contents of this document, without permission or ownership, is strictly prohibited.

Project No. TCC-00001C	
SGV Document No. TCC00001_TC_NY_FACL_EFC_25CM0331	
Created By	MARKUS KOFOID
Drawn By	MARKUS KOFOID
Checked By	JEREMY JOHNSON
Approved By	KEITH MERRICK

REV. NO 3	FTTX_TCC_ORT
SIZE 11 x 17	NORTHWAY STAKING SHEETS
-	SS:14 of 29



Legend

- Pole-Attached
- aerial_service_loop
- BB-1
- new_strand

3-Apr-2025 REV 03

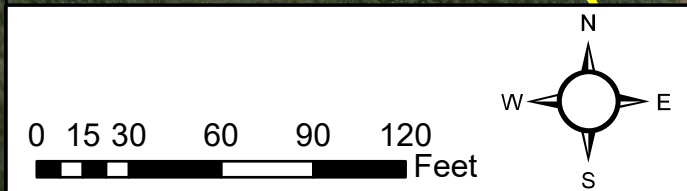
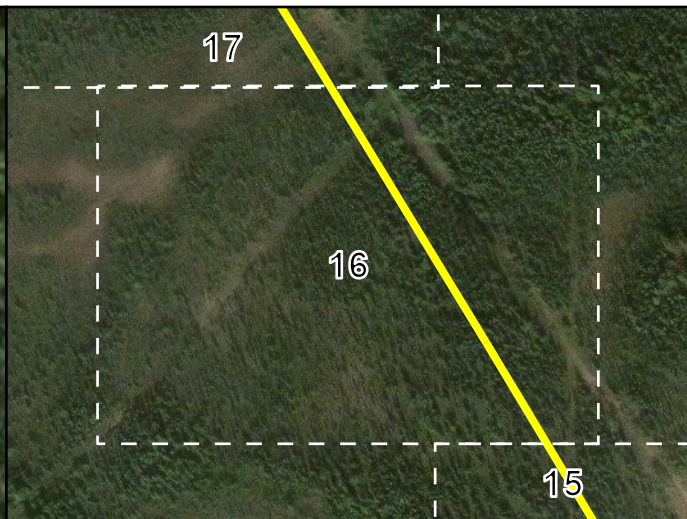
REVISIONS					
REV. NO	DATE	DESCRIPTION	BY	CHK	APR
1	2/25/25	65% Draft for Review	MK	JJ	KM
2	3/19/25	95% Draft for Review	MK	JJ	KM
3	4/4/25	Issue For Construction	MK	JJ	KM
-	-	-	-	-	-

Source: Esri, Maxar, Earthstar Geographics, and the GIS User Community, Maxar

This document contains Client & SGV International LLC confidential information which is protected by laws of confidentiality. Taking of any action related to the contents of this document, without permission or ownership, is strictly prohibited.

Project No. TCC-00001C	REV. NO 3
SGV Document No. TCC00001_TC_NY_FACL_EFC_25CM0331	SIZE 11 x 17
Created By MARKUS KOFOID	DATE 4/1/25
Drawn By MARKUS KOFOID	DATE 4/1/25
Checked By JEREMY JOHNSON	DATE 4/2/25
Approved By KEITH MERRICK	DATE 4/3/25

FTTX_TCC_ORT	
NORTHWAY STAKING SHEETS	
-	SS:15 of 29



Legend

- Pole-Attached
- BB-1
- new_strand

3-Apr-2025 REV 03

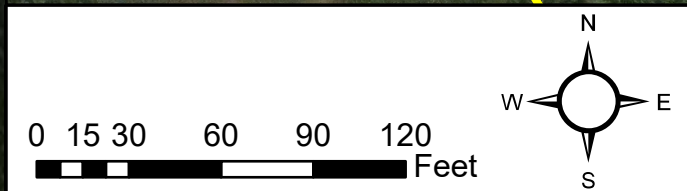
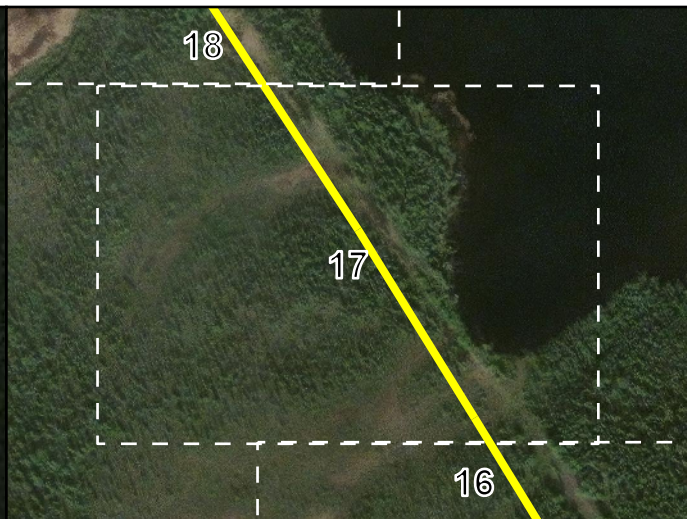
REVISIONS					
REV. NO	DATE	DESCRIPTION	BY	CHK	APR
1	2/25/25	65% Draft for Review	MK	JJ	KM
2	3/19/25	95% Draft for Review	MK	JJ	KM
3	4/4/25	Issue For Construction	MK	JJ	KM
-	-	-	-	-	-

Source: Esri, Maxar, Earthstar Geographics, and the GIS User Community, Maxar

This document contains Client & SGV International LLC confidential information which is protected by laws of confidentiality. Taking of any action related to the contents of this document, without permission or ownership, is strictly prohibited.

Project No. TCC-00001C	
SGV Document No. TCC00001_TC_NY_FACL_EFC_25CM0331	
Created By	MARKUS KOFOID
Drawn By	MARKUS KOFOID
Checked By	JEREMY JOHNSON
Approved By	KEITH MERRICK

REV. NO 3	FTTX_TCC_ORT
SIZE 11 x 17	NORTHWAY STAKING SHEETS
-	SS:16 of 29



Legend

- Parcel
- Pole-Attached
- BB-1
- new_strand

3-Apr-2025 REV 03

REVISIONS					
REV. NO	DATE	DESCRIPTION	BY	CHK	APR
1	2/25/25	65% Draft for Review	MK	JJ	KM
2	3/19/25	95% Draft for Review	MK	JJ	KM
3	4/4/25	Issue For Construction	MK	JJ	KM
-	-	-	-	-	-

Source: Esri, Maxar, Earthstar Geographics, and the GIS User Community, Maxar

**Tanana
Chiefs
Conference**

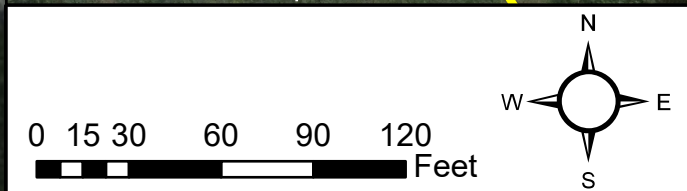
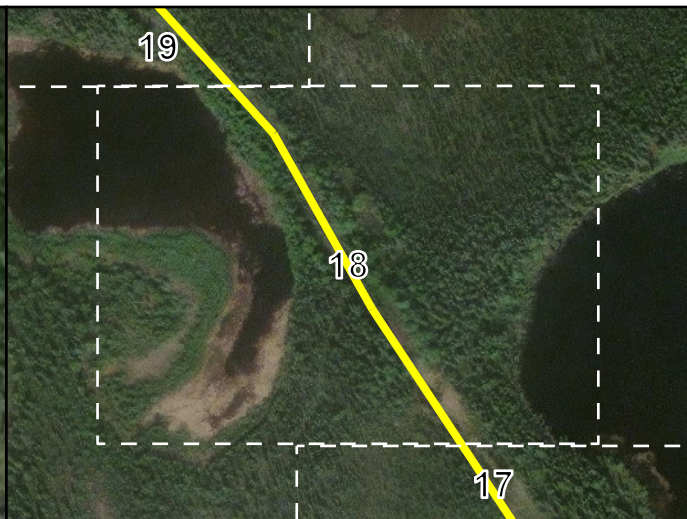
This document contains Client & SGV International LLC confidential information which is protected by laws of confidentiality. Taking of any action related to the contents of this document, without permission or ownership, is strictly prohibited.

Project No. TCC-00001C

SGV Document No. TCC00001_TC_NY_FACL_EFC_25CM0331

Created By	MARKUS KOFOID	DATE	4/1/25
Drawn By	MARKUS KOFOID	DATE	4/1/25
Checked By	JEREMY JOHNSON	DATE	4/2/25
Approved By	KEITH MERRICK	DATE	4/3/25

REV. NO	3	FTTX_TCC_ORT
SIZE	11 x 17	NORTHWAY STAKING SHEETS
-		SS:17 of 29



Legend

- Parcel
- Pole-Attached
- aerial_service_loop
- BB-1
- new_strand

3-Apr-2025 REV 03

REVISIONS					
REV. NO	DATE	DESCRIPTION	BY	CHK	APR
1	2/25/25	65% Draft for Review	MK	JJ	KM
2	3/19/25	95% Draft for Review	MK	JJ	KM
3	4/4/25	Issue For Construction	MK	JJ	KM
-	-	-	-	-	-

Source: Esri, Maxar, Earthstar Geographics, and the GIS User Community, Maxar

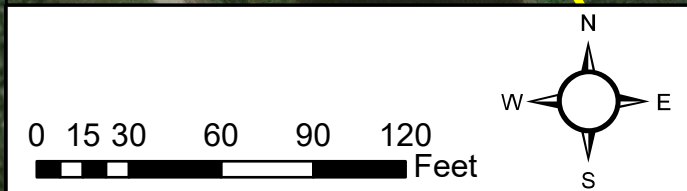
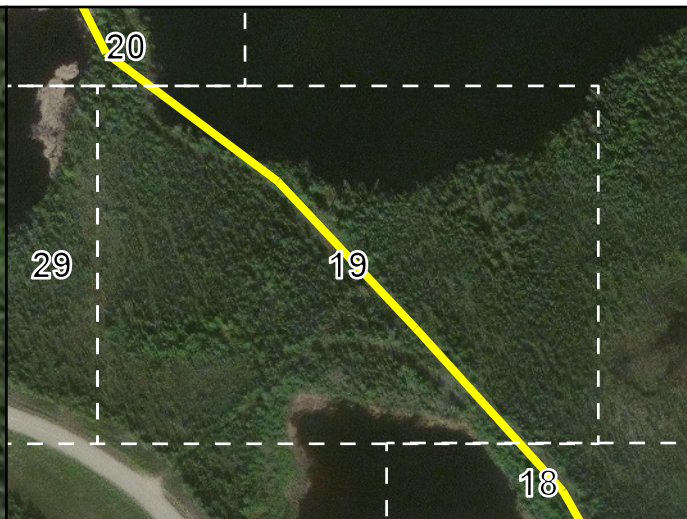
This document contains Client & SGV International LLC confidential information which is protected by laws of confidentiality. Taking of any action related to the contents of this document, without permission or ownership, is strictly prohibited.

Project No. TCC-00001C

SGV Document No. TCC00001_TC_NY_FACL_EFC_25CM0331

Created By	MARKUS KOFOID	DATE	4/1/25
Drawn By	MARKUS KOFOID	DATE	4/1/25
Checked By	JEREMY JOHNSON	DATE	4/2/25
Approved By	KEITH MERRICK	DATE	4/3/25

REV. NO	3	FTTX_TCC_ORT
SIZE	11 x 17	NORTHWAY STAKING SHEETS
-	-	SS:18 of 29



Legend

- Parcel
- ParcelEasement
- Pole-Attached
- BB-1
- new_strand

3-Apr-2025 REV 03

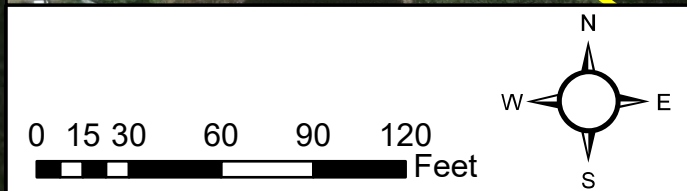
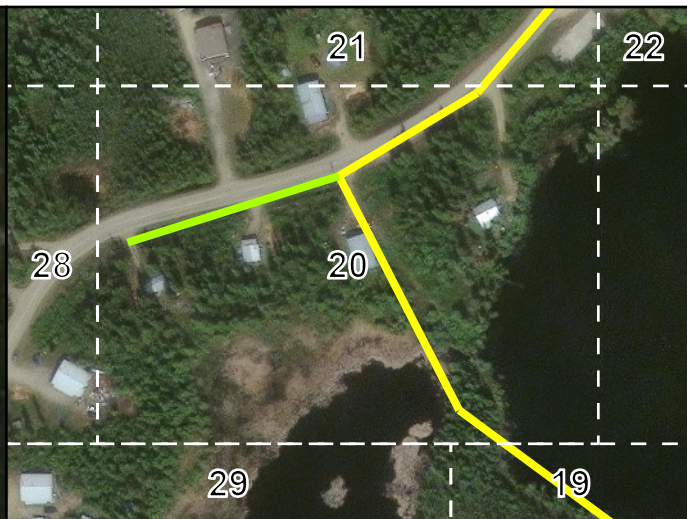
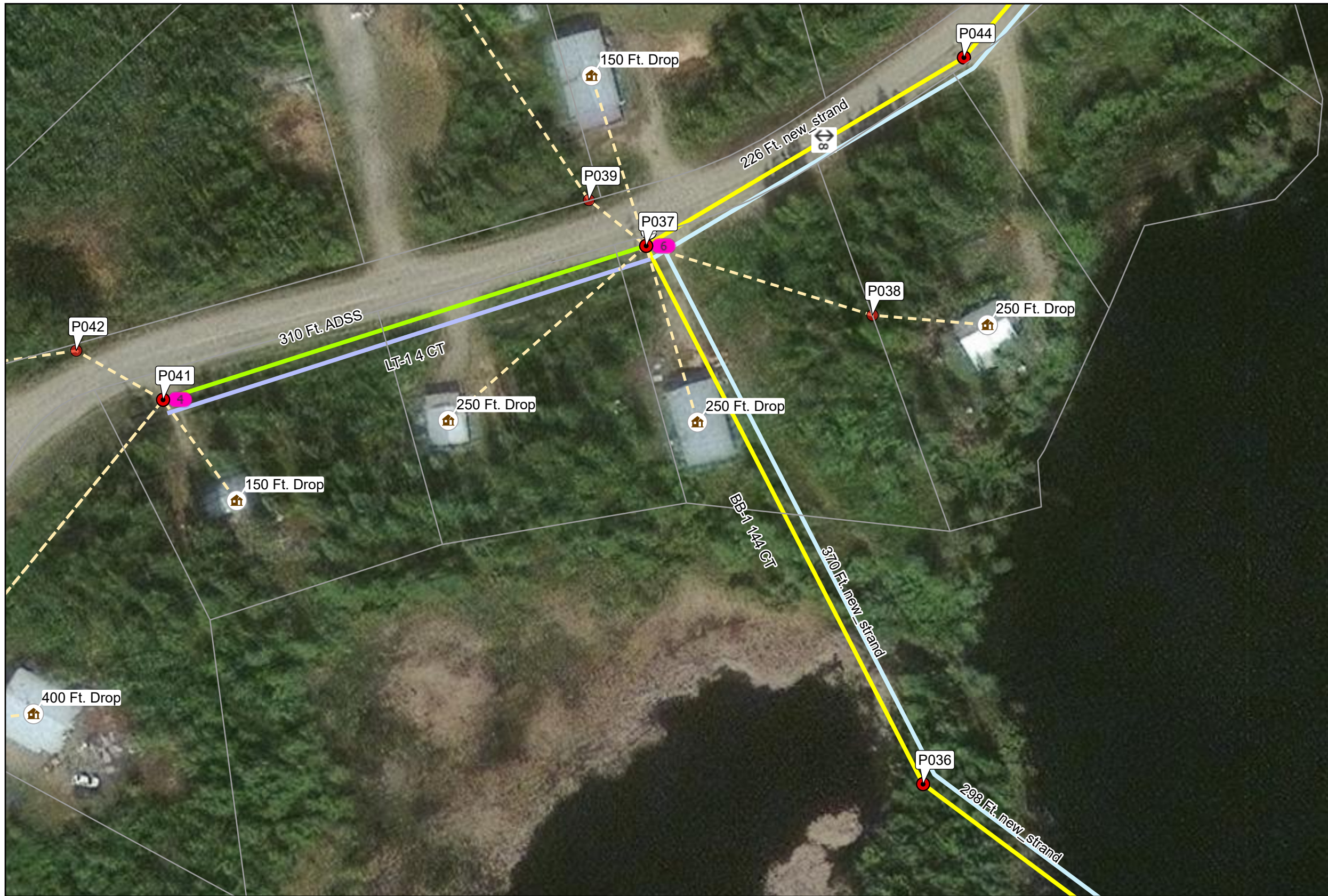
REVISIONS					
REV. NO	DATE	DESCRIPTION	BY	CHK	APR
1	2/25/25	65% Draft for Review	MK	JJ	KM
2	3/19/25	95% Draft for Review	MK	JJ	KM
3	4/4/25	Issue For Construction	MK	JJ	KM
-	-	-	-	-	-

Source: Esri, Maxar, Earthstar Geographics, and the GIS User Community, Maxar

This document contains Client & SGV International LLC confidential information which is protected by laws of confidentiality. Taking of any action related to the contents of this document, without permission or ownership, is strictly prohibited.

Project No. TCC-00001C	REV. NO 3
SGV Document No. TCC00001_TC_NY_FACL_EFC_25CM0331	SIZE 11 x 17
Created By MARKUS KOFOID	DATE 4/1/25
Drawn By MARKUS KOFOID	DATE 4/1/25
Checked By JEREMY JOHNSON	DATE 4/2/25
Approved By KEITH MERRICK	DATE 4/3/25

FTTX_TCC_ORT	
NORTHWAY STAKING SHEETS	
-	SS:19 of 29



Legend

Parcel	aerial_service_loop
ORT HOME	aerial_drop
Pole-Attached	BB-1
Pole-Drop	LT-1
2 tether	ADSS
4 port evolv	new_strand
6 port evolv	



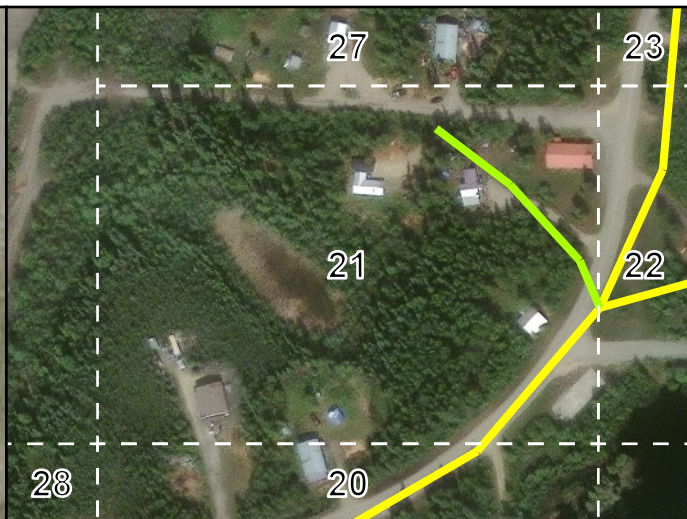
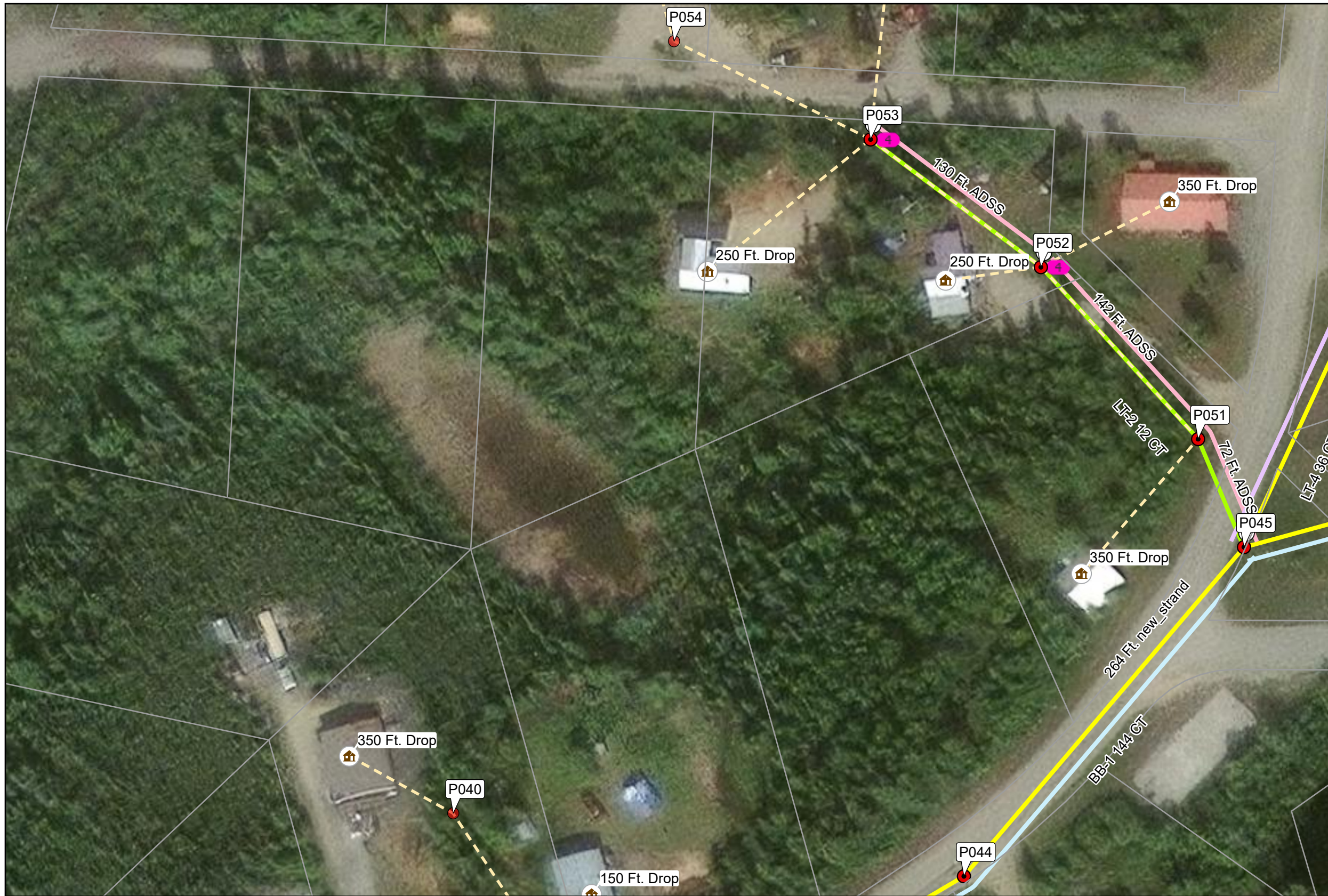
REVISIONS					
REV. NO	DATE	DESCRIPTION	BY	CHK	APR
1	2/25/25	65% Draft for Review	MK	JJ	KM
2	3/19/25	95% Draft for Review	MK	JJ	KM
3	4/4/25	Issue For Construction	MK	JJ	KM
-	-		-	-	-

Source: Esri, Maxar, Earthstar Geographics, and the GIS User Community, Maxar

This document contains Client & SGV International LLC confidential information which is protected by laws of confidentiality. Taking of any action related to the contents of this document, without permission or ownership, is strictly prohibited.

Project No. TCC-00001C	REV. NO 3
SGV Document No. TCC00001_TC_NY_FACL_EFC_25CM0331	SIZE 11 x 17
Created By MARKUS KOFOID	DATE 4/1/25
Drawn By MARKUS KOFOID	DATE 4/1/25
Checked By JEREMY JOHNSON	DATE 4/2/25
Approved By KEITH MERRICK	DATE 4/3/25

FTTX_TCC_ORT	
NORTHWAY STAKING SHEETS	
-	SS:20 of 29



Legend

Parcel	4 port evolv
ORT HOME	aerial drop
Pole-Attached	BB-1
Pole-Drop	LT-2
1 tether	LT-4
4 tether	ADSS
	new_strand

3-Apr-2025 REV 03

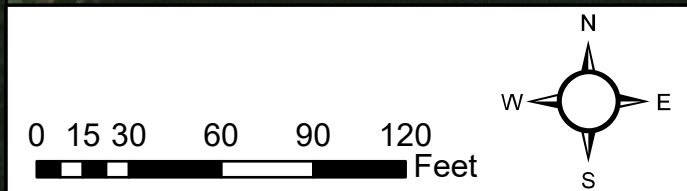
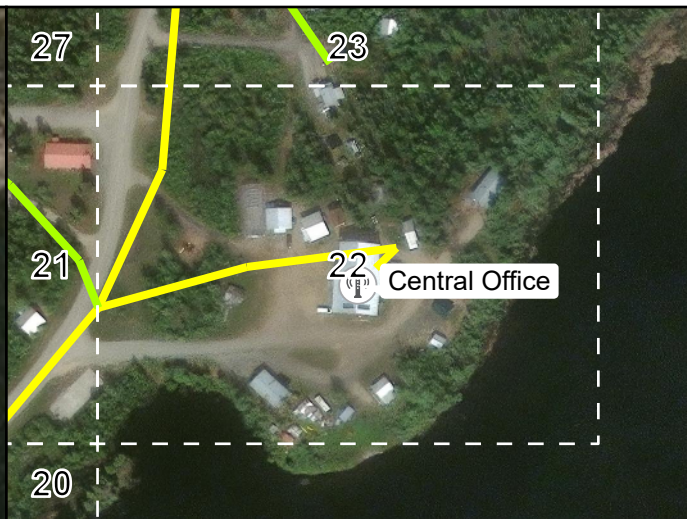
REVISIONS					
REV. NO	DATE	DESCRIPTION	BY	CHK	APR
1	2/25/25	65% Draft for Review	MK	JJ	KM
2	3/19/25	95% Draft for Review	MK	JJ	KM
3	4/4/25	Issue For Construction	MK	JJ	KM
-	-		-	-	-

Source: Esri, Maxar, Earthstar Geographics, and the GIS User Community, Maxar

This document contains Client & SGV International LLC confidential information which is protected by laws of confidentiality. Taking of any action related to the contents of this document, without permission or ownership, is strictly prohibited.

Project No. TCC-00001C	REV. NO 3
SGV Document No. TCC00001_TC_NY_FACL_EFC_25CM0331	SIZE 11 x 17
Created By MARKUS KOFOID	DATE 4/1/25
Drawn By MARKUS KOFOID	DATE 4/1/25
Checked By JEREMY JOHNSON	DATE 4/2/25
Approved By KEITH MERRICK	DATE 4/3/25

FTTX_TCC_ORT	
NORTHWAY STAKING SHEETS	
-	SS:21 of 29



Legend

— Parcel	④ 4 port evolv
🏠 ORT HOME	— aerial drop
📡 ORT CO	— BB-1
● Pole-Attached	— LT-2
● Pole-Drop	— LT-4
① 1 tether	— ADSS
④ 4 tether	— new_strand

3-Apr-2025 REV 03

REVISIONS					
REV. NO	DATE	DESCRIPTION	BY	CHK	APR
1	2/25/25	65% Draft for Review	MK	JJ	KM
2	3/19/25	95% Draft for Review	MK	JJ	KM
3	4/4/25	Issue For Construction	MK	JJ	KM
-	-	-	-	-	-

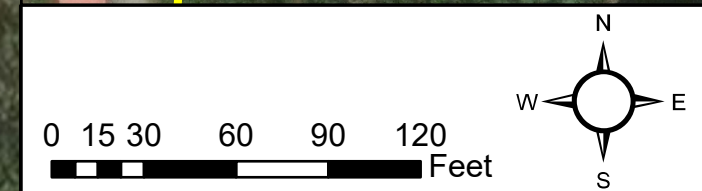
Source: Esri, Maxar, Earthstar Geographics, and the GIS User Community, Maxar

Tanana Chiefs Conference

This document contains Client & SGV International LLC confidential information which is protected by laws of confidentiality. Taking of any action related to the contents of this document, without permission or ownership, is strictly prohibited.

Project No. TCC-00001C	REV. NO 3
SGV Document No. TCC00001_TC_NY_FACL_EFC_25CM0331	SIZE 11 x 17
Created By MARKUS KOFOID	DATE 4/1/25
Drawn By MARKUS KOFOID	DATE 4/1/25
Checked By JEREMY JOHNSON	DATE 4/2/25
Approved By KEITH MERRICK	DATE 4/3/25

FTTX_TCC_ORT	
NORTHWAY STAKING SHEETS	
-	SS:22 of 29



Legend

—	Parcel		4 port evolv
	ORT HOME		aerial_service_loop
	Pole-Attached		aerial drop
	Pole-Drop		LT-4
	1 tether		LT-5
	2 tether		ADSS
	2 port evolv		new_strand

3-Apr-2025 REV 03

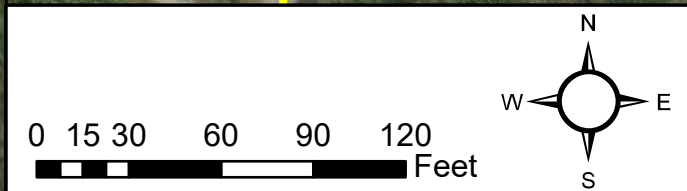
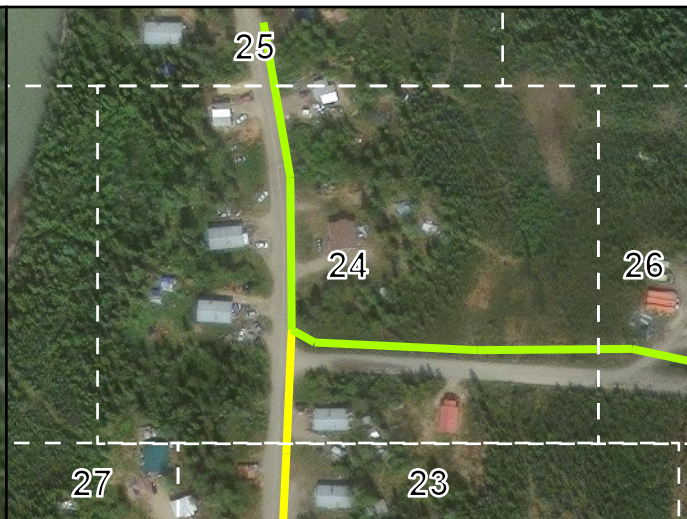
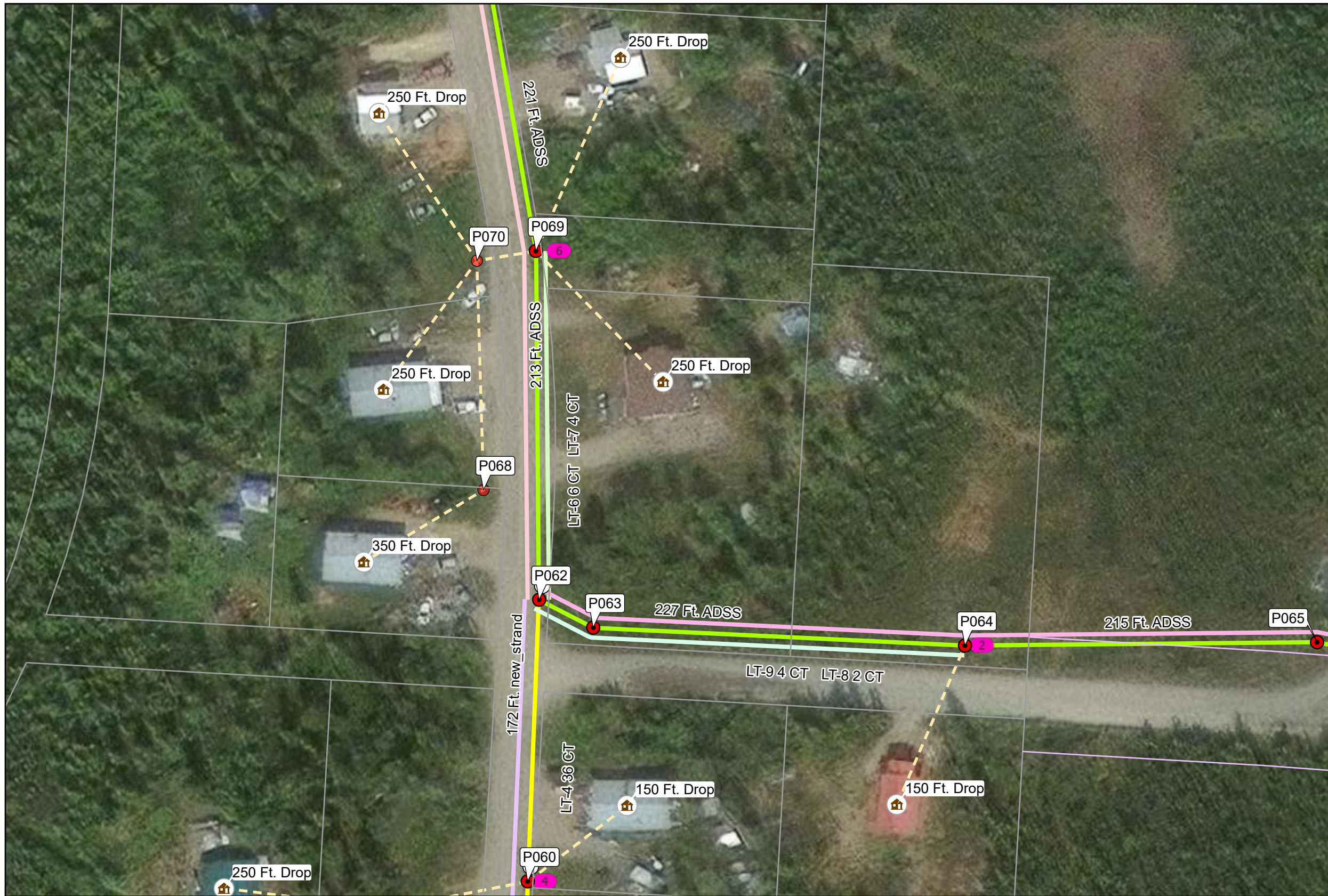
REVISIONS					
REV. NO	DATE	DESCRIPTION	BY	CHK	APR
1	2/25/25	65% Draft for Review	MK	JJ	KM
2	3/19/25	95% Draft for Review	MK	JJ	KM
3	4/4/25	Issue For Construction	MK	JJ	KM
-	-		-	-	-

Source: Esri, Maxar, Earthstar Geographics, and the GIS User Community, Maxar

This document contains Client & SGV International LLC confidential information which is protected by laws of confidentiality. Taking of any action related to the contents of this document, without permission or ownership, is strictly prohibited.

Project No. TCC-00001C
 SGV Document No. TCC00001_TC_NY_FACL_EFC_25CM0331
 Created By MARKUS KOFOID
 Drawn By MARKUS KOFOID
 Checked By JEREMY JOHNSON
 Approved By KEITH MERRICK

REV. NO	3	FTTX_TCC_ORT
SIZE	11 x 17	NORTHWAY STAKING SHEETS
		SS:23 of 29



Legend

— Parcel	6 6 port evolv
— Parcel Easement	— aerial drop
🏠 ORT HOME	— LT-4
● Pole-Attached	— LT-6
● Pole-Drop	— LT-7
① 1 tether	— LT-8
④ 4 tether	— LT-9
2 2 port evolv	— ADSS
4 4 port evolv	— new_strand



3-Apr-2025 REV 03

REVISIONS					
REV. NO	DATE	DESCRIPTION	BY	CHK	APR
1	2/25/25	65% Draft for Review	MK	JJ	KM
2	3/19/25	95% Draft for Review	MK	JJ	KM
3	4/4/25	Issue For Construction	MK	JJ	KM
-	-	-	-	-	-

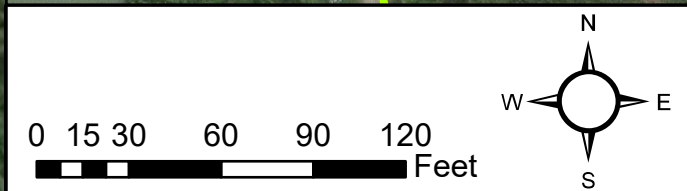
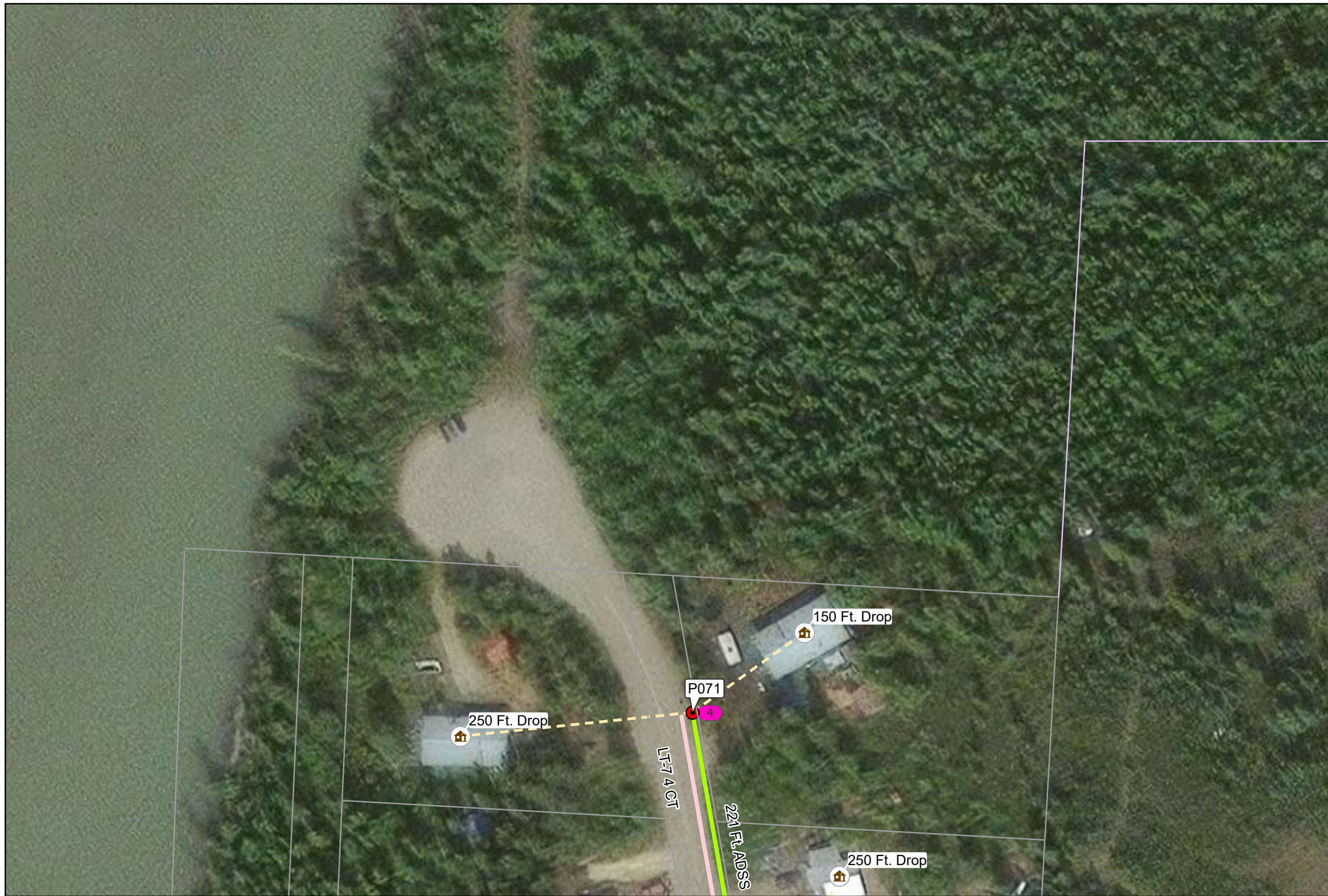
Tanana Chiefs Conference

This document contains Client & SGV International LLC confidential information which is protected by laws of confidentiality. Taking of any action related to the contents of this document, without permission or ownership, is strictly prohibited.

Project No. TCC-00001C
 SGV Document No. TCC00001_TC_NY_FACL_EFC_25CM0331
 Created By MARKUS KOFOID DATE 4/1/25
 Drawn By MARKUS KOFOID DATE 4/1/25
 Checked By JEREMY JOHNSON DATE 4/2/25
 Approved By KEITH MERRICK DATE 4/3/25

REV. NO	3	FTTX_TCC_ORT
SIZE	11 x 17	
		NORTHWAY STAKING SHEETS
		SS:24 of 29

Source: Esri, Maxar, Earthstar Geographics, and the GIS User Community, Maxar



Legend

- Parcel
- ParcelEasement
- ORT HOME
- Pole-Attached
- 4 port evol
- aerial drop
- LT-7
- ADSS




3-Apr-2025 REV 03

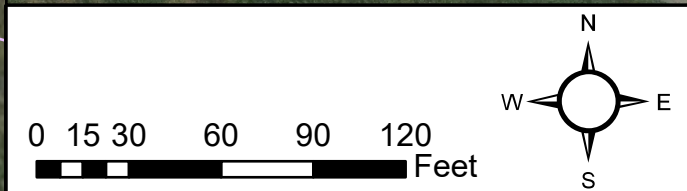
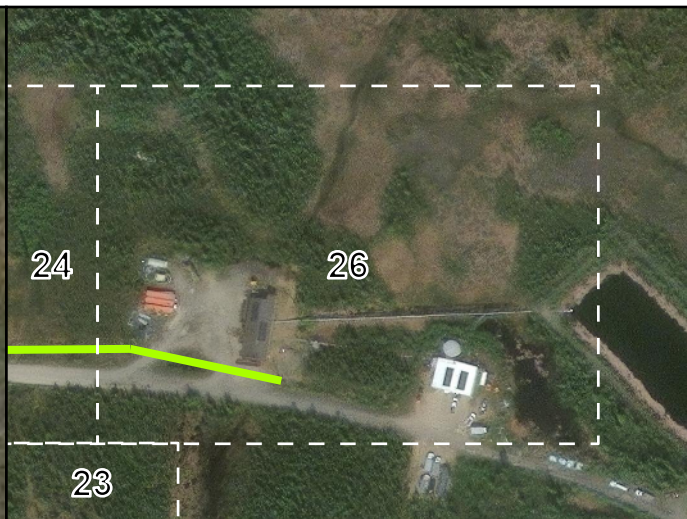
REVISIONS					
REV. NO	DATE	DESCRIPTION	BY	CHK	APR
1	2/25/25	65% Draft for Review	MK	JJ	KM
2	3/19/25	95% Draft for Review	MK	JJ	KM
3	4/4/25	Issue For Construction	MK	JJ	KM
-	-	-	-	-	-

Source: Esri, Maxar, Earthstar Geographics, and the GIS User Community, Maxar

This document contains Client & SGV International LLC confidential information which is protected by laws of confidentiality. Taking of any action related to the contents of this document, without permission or ownership, is strictly prohibited.

	
Project No. TCC-00001C	REV. NO 3
SGV Document No. TCC00001_TC_NY_FACL_EFC_25CM0331	SIZE 11 x 17
Created By MARKUS KOFOID	DATE 4/1/25
Drawn By MARKUS KOFOID	DATE 4/1/25
Checked By JEREMY JOHNSON	DATE 4/2/25
Approved By KEITH MERRICK	DATE 4/3/25

FTTX_TCC_ORT	
NORTHWAY STAKING SHEETS	
-	SS:25 of 29



Legend

- ParcelEasement
- ORT HOME
- Pole-Attached
- Pole-Drop
- 4 port evolv
- aerial drop
- LT-9
- ADSS

3-Apr-2025 REV 03

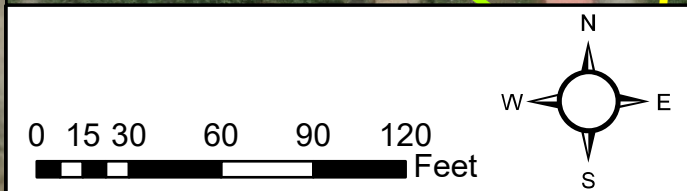
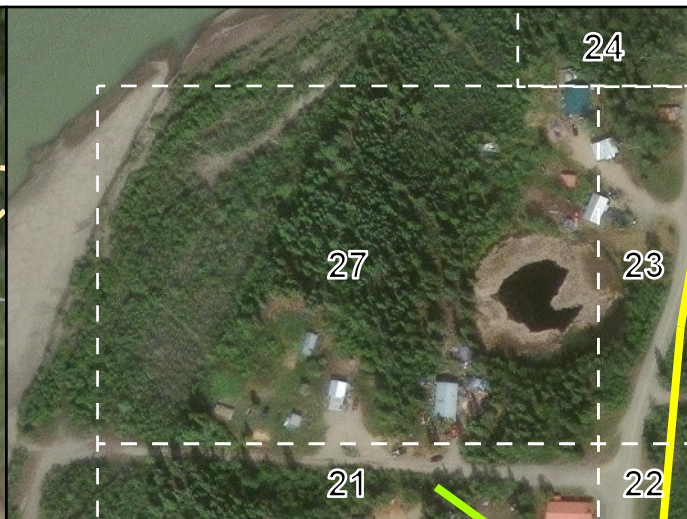
REVISIONS					
REV. NO	DATE	DESCRIPTION	BY	CHK	APR
1	2/25/25	65% Draft for Review	MK	JJ	KM
2	3/19/25	95% Draft for Review	MK	JJ	KM
3	4/4/25	Issue For Construction	MK	JJ	KM
-	-	-	-	-	-

Source: Esri, Maxar, Earthstar Geographics, and the GIS User Community, Maxar

This document contains Client & SGV International LLC confidential information which is protected by laws of confidentiality. Taking of any action related to the contents of this document, without permission or ownership, is strictly prohibited.

Project No. TCC-00001C
 SGV Document No. TCC00001_TC_NY_FACL_EFC_25CM0331
 Created By MARKUS KOFOID DATE 4/1/25
 Drawn By MARKUS KOFOID DATE 4/1/25
 Checked By JEREMY JOHNSON DATE 4/2/25
 Approved By KEITH MERRICK DATE 4/3/25

REV. NO 3	FTTX_TCC_ORT
SIZE 11 x 17	NORTHWAY STAKING SHEETS
-	SS:26 of 29



Legend

- Parcel
- 🏠 ORT HOME
- Pole-Drop
- - - aerial drop

3-Apr-2025 REV 03

REVISIONS					
REV. NO	DATE	DESCRIPTION	BY	CHK	APR
1	2/25/25	65% Draft for Review	MK	JJ	KM
2	3/19/25	95% Draft for Review	MK	JJ	KM
3	4/4/25	Issue For Construction	MK	JJ	KM
-	-	-	-	-	-

Source: Esri, Maxar, Earthstar Geographics, and the GIS User Community, Maxar

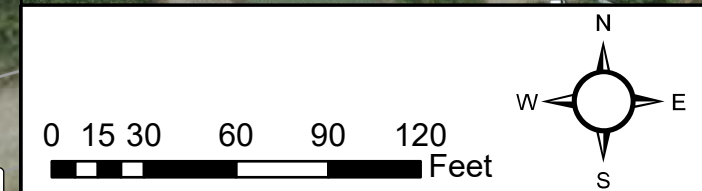
This document contains Client & SGV International LLC confidential information which is protected by laws of confidentiality. Taking of any action related to the contents of this document, without permission or ownership, is strictly prohibited.

Project No. TCC-00001C	REV. NO 3
SGV Document No. TCC00001_TC_NY_FACL_EFC_25CM0331	SIZE 11 x 17
Created By MARKUS KOFOID	DATE 4/1/25
Drawn By MARKUS KOFOID	DATE 4/1/25
Checked By JEREMY JOHNSON	DATE 4/2/25
Approved By KEITH MERRICK	DATE 4/3/25

FTTX_TCC_ORT

NORTHWAY STAKING SHEETS

- SS:27 of 29



Legend

- Parcel
- Parcel Easement
- 🏠 ORT HOME
- Pole-Attached
- Pole-Drop
- 4 port evolv
- aerial drop
- LT-1
- ADSS

3-Apr-2025 REV 03

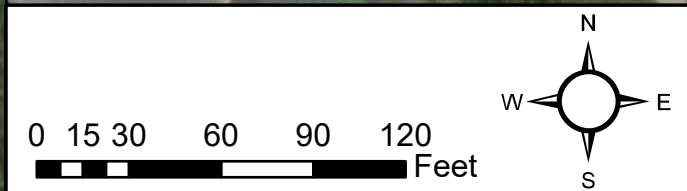
REVISIONS					
REV. NO	DATE	DESCRIPTION	BY	CHK	APR
1	2/25/25	65% Draft for Review	MK	JJ	KM
2	3/19/25	95% Draft for Review	MK	JJ	KM
3	4/4/25	Issue For Construction	MK	JJ	KM
-	-	-	-	-	-

Source: Esri, Maxar, Earthstar Geographics, and the GIS User Community, Maxar

This document contains Client & SGV International LLC confidential information which is protected by laws of confidentiality. Taking of any action related to the contents of this document, without permission or ownership, is strictly prohibited.

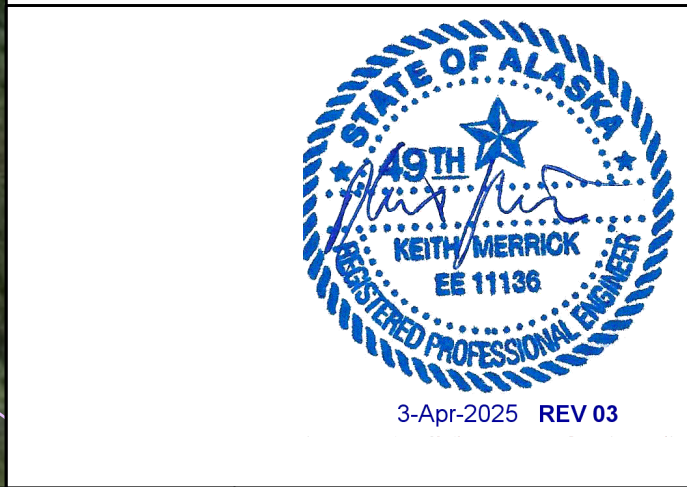
Project No. TCC-00001C	
SGV Document No. TCC00001_TC_NY_FACL_EFC_25CM0331	
Created By	MARKUS KOFOID
Drawn By	MARKUS KOFOID
Checked By	JEREMY JOHNSON
Approved By	KEITH MERRICK

REV. NO	3
SIZE	11 x 17
FTTX_TCC_ORT	
NORTHWAY STAKING SHEETS	
-	SS:28 of 29



Legend

- Parcel
- ParcelEasement
- ORT HOME
- aerial drop
- new_strand



REVISIONS					
REV. NO	DATE	DESCRIPTION	BY	CHK	APR
1	2/25/25	65% Draft for Review	MK	JJ	KM
2	3/19/25	95% Draft for Review	MK	JJ	KM
3	4/4/25	Issue For Construction	MK	JJ	KM
-	-	-	-	-	-

Source: Esri, Maxar, Earthstar Geographics, and the GIS User Community, Maxar

This document contains Client & SGV International LLC confidential information which is protected by laws of confidentiality. Taking of any action related to the contents of this document, without permission or ownership, is strictly prohibited.

Project No. TCC-00001C
 SGV Document No. TCC00001_TC_NY_FACL_EFC_25CM0331
 Created By MARKUS KOFOID DATE 4/1/25
 Drawn By MARKUS KOFOID DATE 4/1/25
 Checked By JEREMY JOHNSON DATE 4/2/25
 Approved By KEITH MERRICK DATE 4/3/25

REV. NO 3	FTTX_TCC_ORT
SIZE 11 x 17	NORTHWAY STAKING SHEETS
-	SS:29 of 29