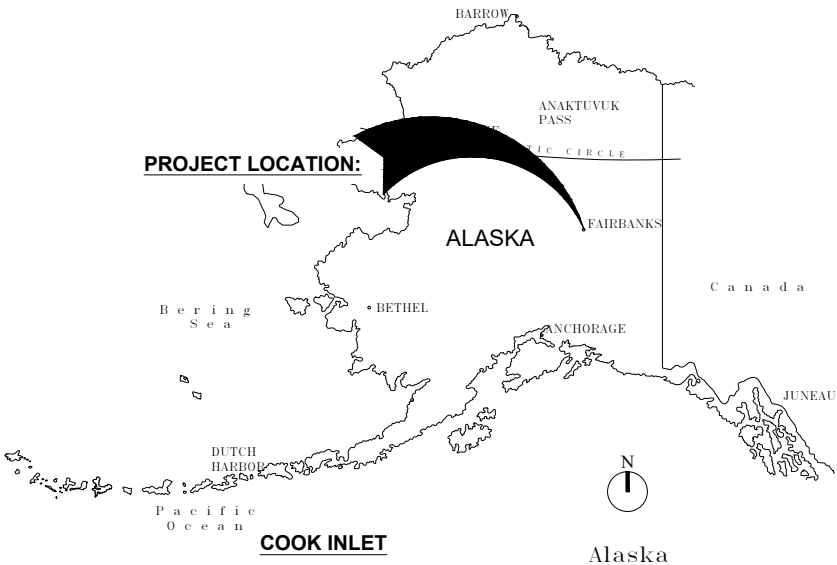


CHIEF PETER JOHN TRIBAL BUILDING RESTROOM UPGRADES FLOORS 2, 3, 4 & 6

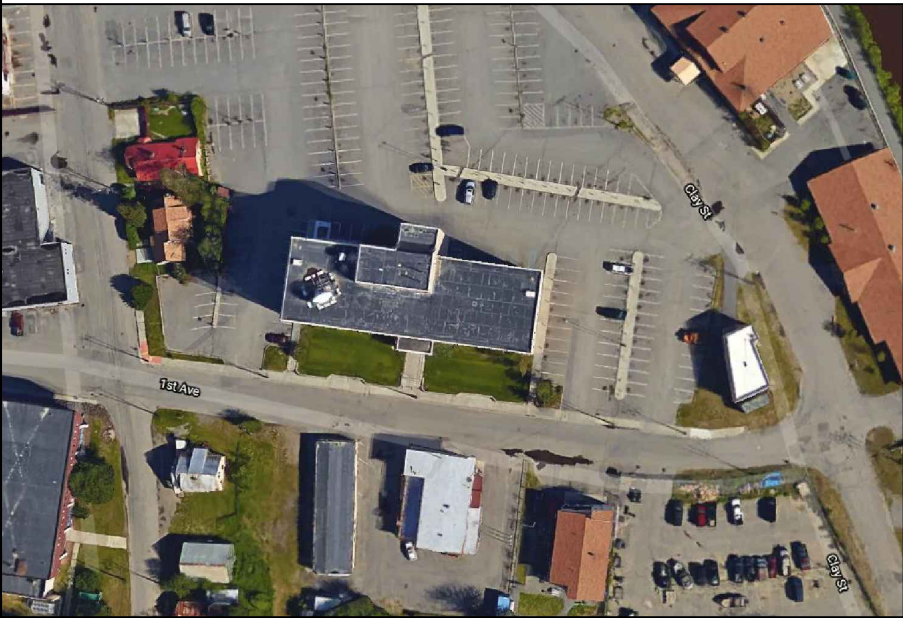
122 1st Ave, Fairbanks, AK 99701



LOCATION MAP



VICINITY MAP



DRAWING INDEX

SHEET NUMBER	SHEET NAME
G-001	COVER SHEET
A-001	LIFE AND SAFETY CODE REVIEW
A-101	ARCHITECTURAL DEMOLITION TYPICAL PLANS
A-102	ARCHITECTURAL RENOVATION TYPICAL PLANS
A-103	ARCH DEMO AND RENO PLANS -6TH FLOOR UNISEX BATHROOM
A-104	ARCHITECTURAL FINISH AND DOOR SCHEDULE
M-101	MECHANICAL RENOVATION - 2ND 3RD, 4TH, & 6TH FLOOR PLAN
M-102	MECHANICAL HVAC PLAN, DEMOLITION AND NEW
M-103	6TH FLOOR UNISEX BATHROOM MECHANICAL PLANS DEMOLITION AND NEW
E-001	ELECTRICAL LEGENDS, ABBREVIATIONS, AND SCHEDULE
E-101	ELECTRICAL LIGHTING PLANS, DEMOLITION AND NEW
E-102	ELECTRICAL POWER PLANS, DEMOLITION AND NEW
E-103	ELECTRICAL SYSTEM PLANS, DEMOLITION AND NEW
E-104	6TH FLOOR UNISEX BATHROOM ELECTRICAL PLANS

PROJECT TEAM

OWNER
TANANA CHIEFS CONFERENCE
TIM TROPPMANN, FACILITIES PROJECT MANAGER
TIMOTHY.TROPPMAN@ TANANACHIEFS.ORG, 907-347-0262

DESIGNER
KUNA ENGINEERING
TROY PHILLIPS, DIRECTOR OF FACILITIES
TPHILLIPS@KUNAENG.COM, 907-947-5776

PROJECT MANAGER
ARCADIS DESIGN AND CONSULTANCY
MARION BELLA, PROJECT MANAGER
MARION.BELLA@ARCADIS.COM, 907-347-6277

GENERAL NOTES

- A. IT IS THE CONTRACTOR'S RESPONSIBILITY TO INSPECT THE JOB SITE TO FAMILIARIZE HER/HIM SELF WITH ALL EXISTING CONDITIONS THAT COULD AFFECT THE INSTALLATION OF ANY WORK SET FORTH IN THESE PLANS. CONTRACTOR IS RESPONSIBLE FOR VERIFYING ALL DIMENSIONS.

B. THE JOB SITE AT THE COMPLETION OF CONSTRUCTION SHALL BE CLEANED OF ANY DEBRIS OR SPOIL RESULTING FROM THE CONSTRUCTION. AT NO TIME SHALL THIS MATERIAL OBSTRUCT THE NORMAL OPERATION OF THE OWNER.

C. ALL TERMINATIONS OF ONE FLOOR MATERIAL TO ANOTHER FLOOR MATERIAL SHALL HAVE REDUCER STRIPS.

D. ALL MATERIALS REQUIRED SHALL BE OF A GRADE AND QUALITY CONSISTENT WITH THE INTENDED USE.

E. INSTALL A CONTINUOUS BEAD OF SEALANT AT ALL GAPS/SEAMS BETWEEN FIXED EQUIPMENT AND WALLS OR OTHER ASSEMBLIES.

F. REFERENCE ALL DISCIPLINES FOR COORDINATING OF WORK.

G. ALL SURFACES AND ITEMS EXPOSED TO VIEW SHALL BE PAINTED OR FINISHED. REFER TO FLOOR PLANS, ROOM FINISH KEY FOR ADDITIONAL PAINTING AND FINISH REQUIREMENTS

H. ALL PENETRATIONS THROUGH FIRE RESISTIVE FLOORS OR WALLS SHALL BE PROTECTED BY MATERIALS AND INSTALLATION DETAILS THAT CONFORM TO THE UNDERWRITER LABORATORIES LISTING FOR THROUGH PENETRATION FIRESTOP SYSTEMS. THE CONTRACTOR SHALL SUBMIT MANUFACTURERS SHOP DRAWINGS AND DATA SHEETS FOR ALL PENETRATIONS.

I. PROVIDE BLOCKING OR BACKING MATERIAL AS REQUIRED.

J. THE OWNER HAS FIRST REFUSAL RIGHTS TO ALL MATERIAL TO BE REMOVED OR DEMOLISHED.

K. THE CONTRACTOR IS ADVISED THAT DAMAGE TO ANY PORTION OF THIS PROJECT'S BUILDING AS A RESULT OF THIS PROJECT IS TO BE REPAIRED AT THE CONTRACTOR'S EXPENSE.

REVISIONS & ADDENDUMS		REMARKS	
#	DATE		

MANAGEMENT		TRP/C	TRP	TRP/CSV	4/28/21	4/28/21
DESIGNED	DRAWN	CHECKED	APPROVED	LAST EDIT	PLOT DATE	SUBMITTAL

CHIEF PETER JOHN TRIBAL BUILDING
TANANA CHIEFS CONFERENCE

COVER SHEET

PROJECT NUMBER
165.030307

DRAWING FILE NAME
030307 -TCC ARCHITECTURAL RESTROOM PLANS.DWG

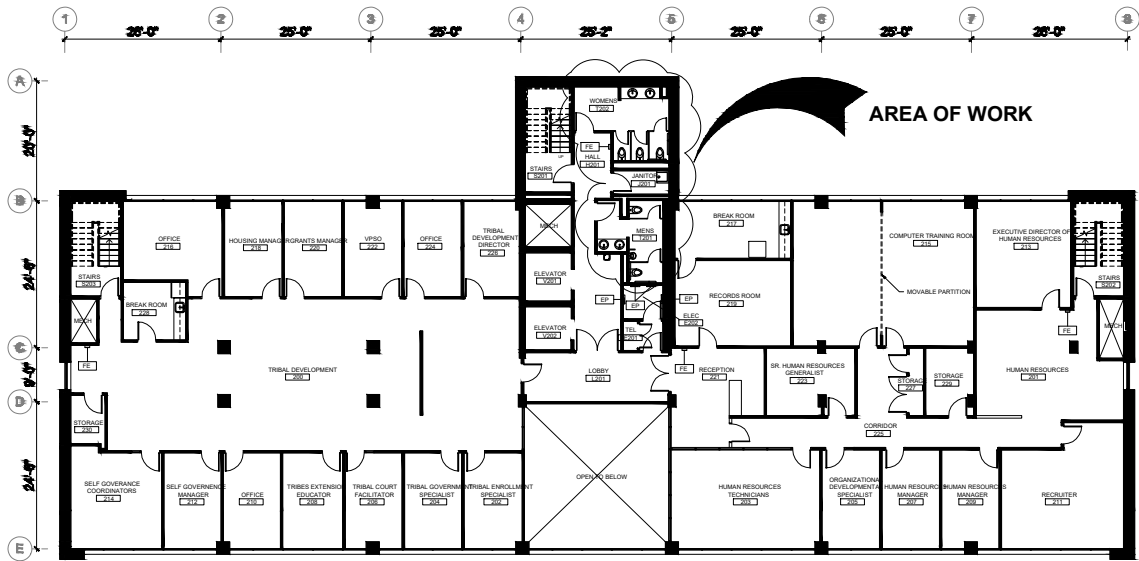
DRAWING SCALE
AS SHOWN

SHEET NUMBER
G-001

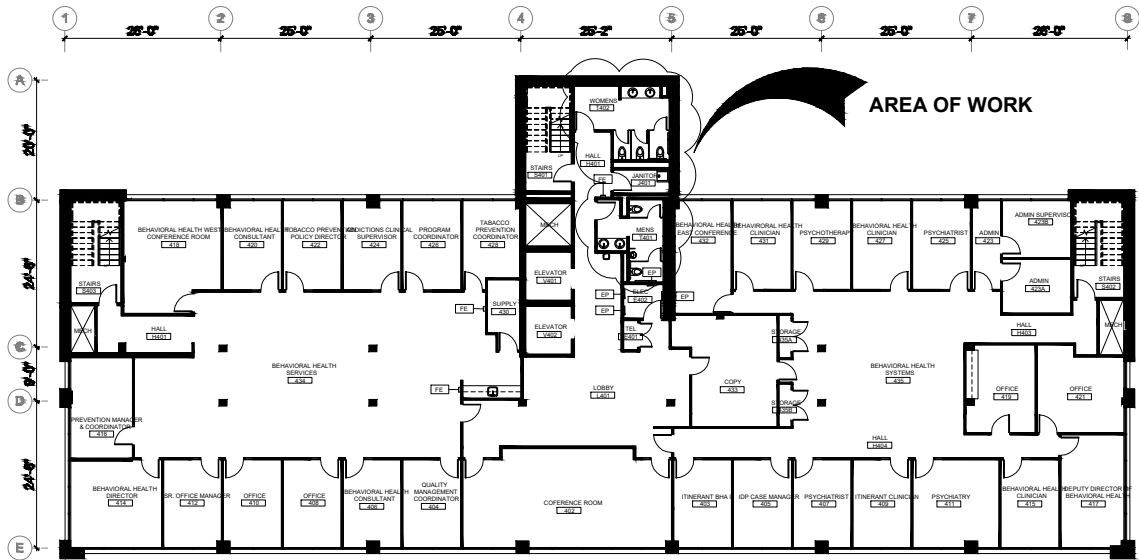
KUNA ENGINEERING

4300 B Street, Suite 605
Anchorage, AK 99503
Office: 907-339-6500
Fax: 907-339-5327
License Number: AELS129381

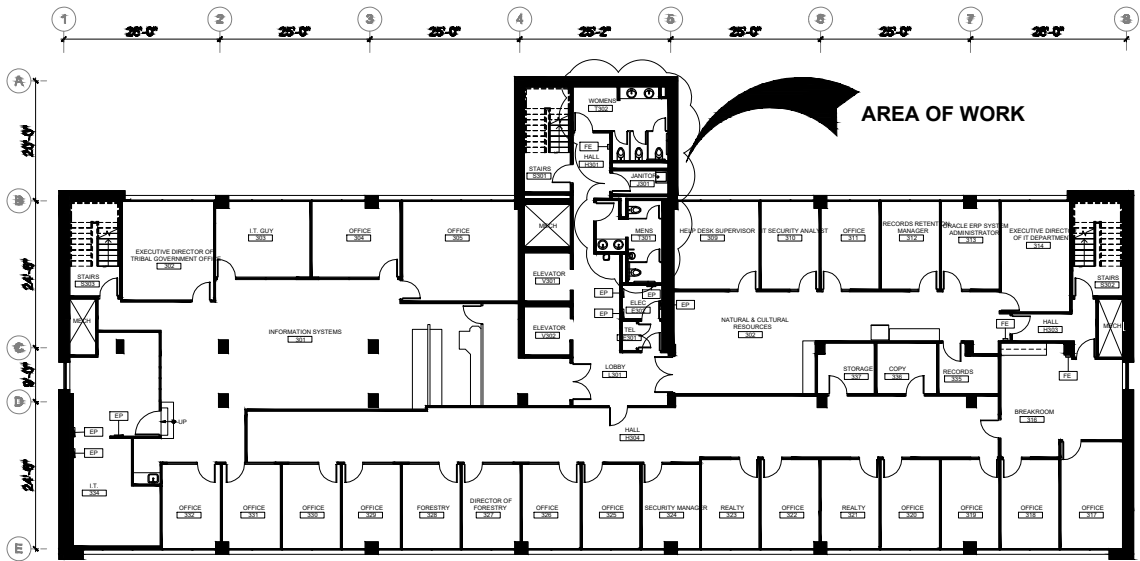
STATE OF ALASKA
49 TH
Troy R. Phillips
P.E. 14770
04/28/21
REGISTERED PROFESSIONAL ARCHITECT



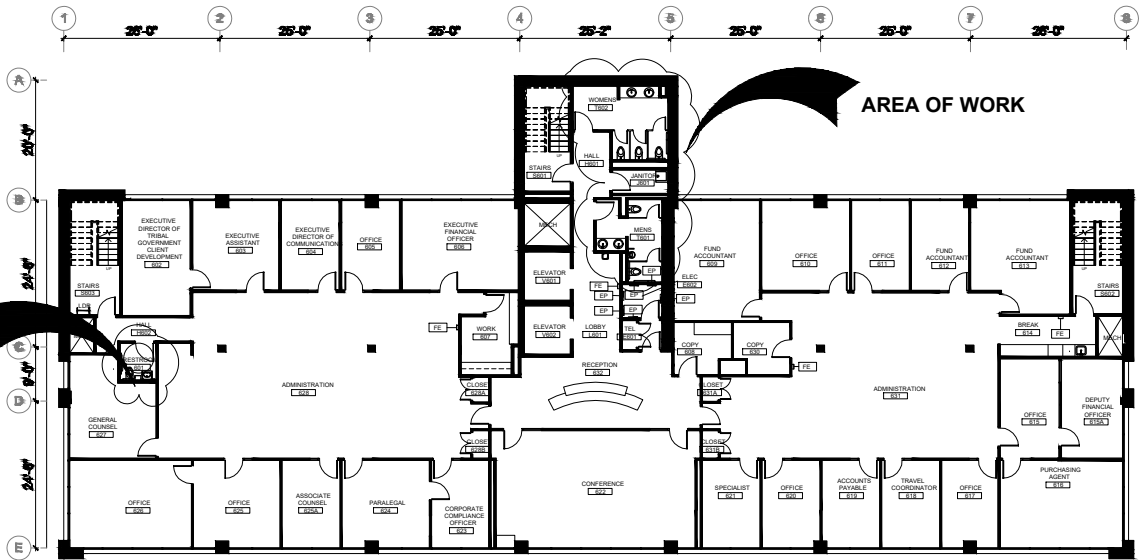
2ND FLOOR PLAN



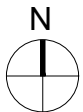
4TH FLOOR PLAN



3RD FLOOR PLAN



6TH FLOOR PLAN



1
A-101

LIFE SAFETY CODE REVIEW

SCALE: 1/8"=1'-0"

CODE ANALYSIS

2015 INTERNATIONAL EXISTING BUILDING CODE (IEBC)
2015 INTERNATIONAL BUILDING CODE (IBC)

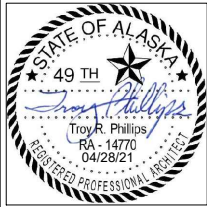
PROJECT DESCRIPTION
TENANT IMPROVEMENT FOR 2ND, 3RD, 4TH, AND 6TH RESTROOMS.
BATHROOMS WILL INCREASE ADA FEATURES BY PROVIDING A WHEELCHAIR ACCESSIBLE STALL IN THE MEN'S ROOMS AND AN AMBULATORY SPACE IN THE WOMEN'S ROOMS.

CLASSIFICATION OF WORK: LEVEL 1 ALTERATION
OCCUPANCY: B
SPRINKLERED: YES

CLASSIFICATION OF WORK: LEVEL 1 ALTERATION
OCCUPANCY: B
SPRINKLERED: YES

[IEBC] 705.2 ALTERATIONS AFFECTING AN AREA CONTAINING A PRIMARY FUNCTION.
WHERE AN ALTERATION AFFECTS THE ACCESSIBILITY TO, OR CONTAINS AN AREA OF PRIMARY FUNCTION, THE ROUTE TO THE PRIMARY FUNCTION AREA SHALL BE ACCESSIBLE. THE ACCESSIBLE ROUTE TO THE PRIMARY FUNCTION AREA SHALL INCLUDE TOILET FACILITIES OR DRINKING FOUNTAINS SERVING THE AREA OF PRIMARY FUNCTION.

EXCEPTIONS:
1. THE COSTS OF PROVIDING THE ACCESSIBLE ROUTE ARE NOT REQUIRED TO EXCEED 20 PERCENT OF THE COSTS OF THE ALTERATIONS AFFECTING THE AREA OF PRIMARY FUNCTION.
2. THIS PROVISION DOES NOT APPLY TO ALTERATIONS LIMITED SOLELY TO WINDOWS, HARDWARE, OPERATING CONTROLS, ELECTRICAL OUTLETS AND SIGNS.
3. THIS PROVISION DOES NOT APPLY TO ALTERATIONS LIMITED SOLELY TO MECHANICAL SYSTEMS, ELECTRICAL SYSTEMS, INSTALLATION OR ALTERATION OF FIRE PROTECTION SYSTEMS AND ABATEMENT OF HAZARDOUS MATERIALS.
4. THIS PROVISION DOES NOT APPLY TO ALTERATIONS UNDERTAKEN FOR THE PRIMARY PURPOSE OF INCREASING THE ACCESSIBILITY OF A FACILITY.



REVISIONS & ADDENDUMS	
#	DATE

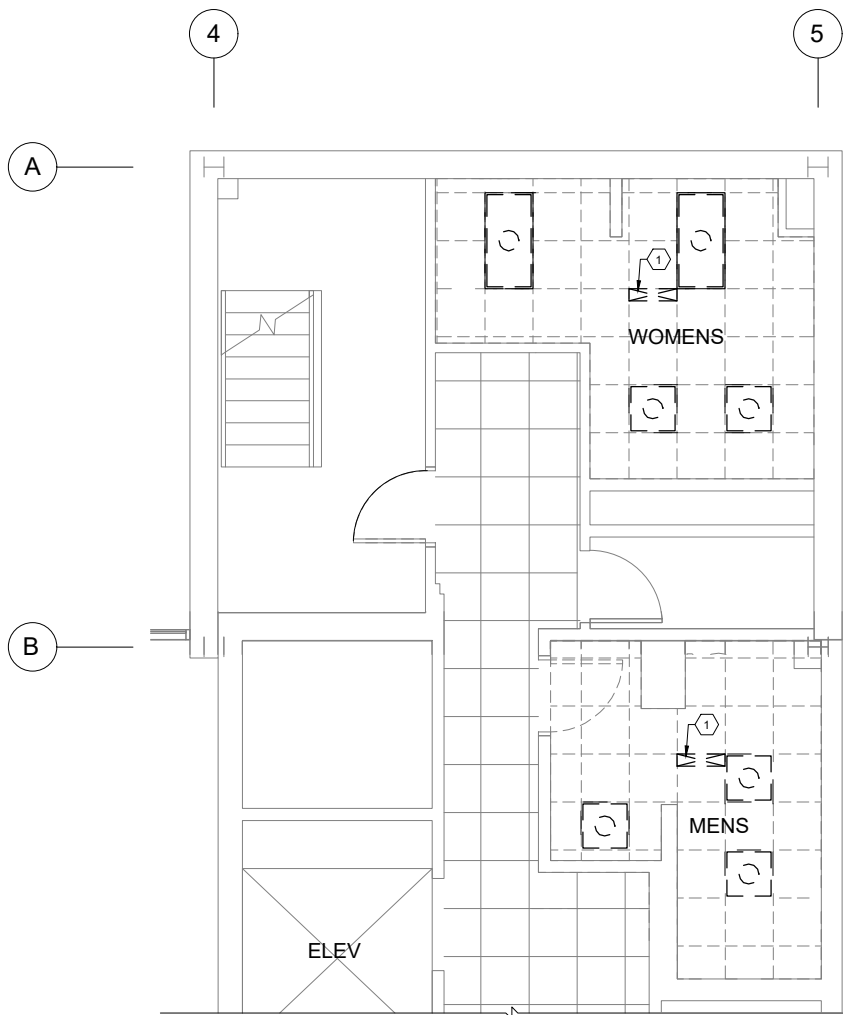
MANAGEMENT	
DESIGNED	TRP
DRAWN	TRP
CHECKED	JFC
APPROVED	TRP
LAST EDIT	4/28/21
PLOT DATE	4/28/21
SUBMITTAL	04/28/21

CHIEF PETER JOHN TRIBAL BUILDING
TANANA CHIEFS CONFERENCE
LIFE SAFETY CODE REVIEW

PROJECT NUMBER 165.030307
DRAWING FILE NAME AS SHOWN

SHEET NUMBER

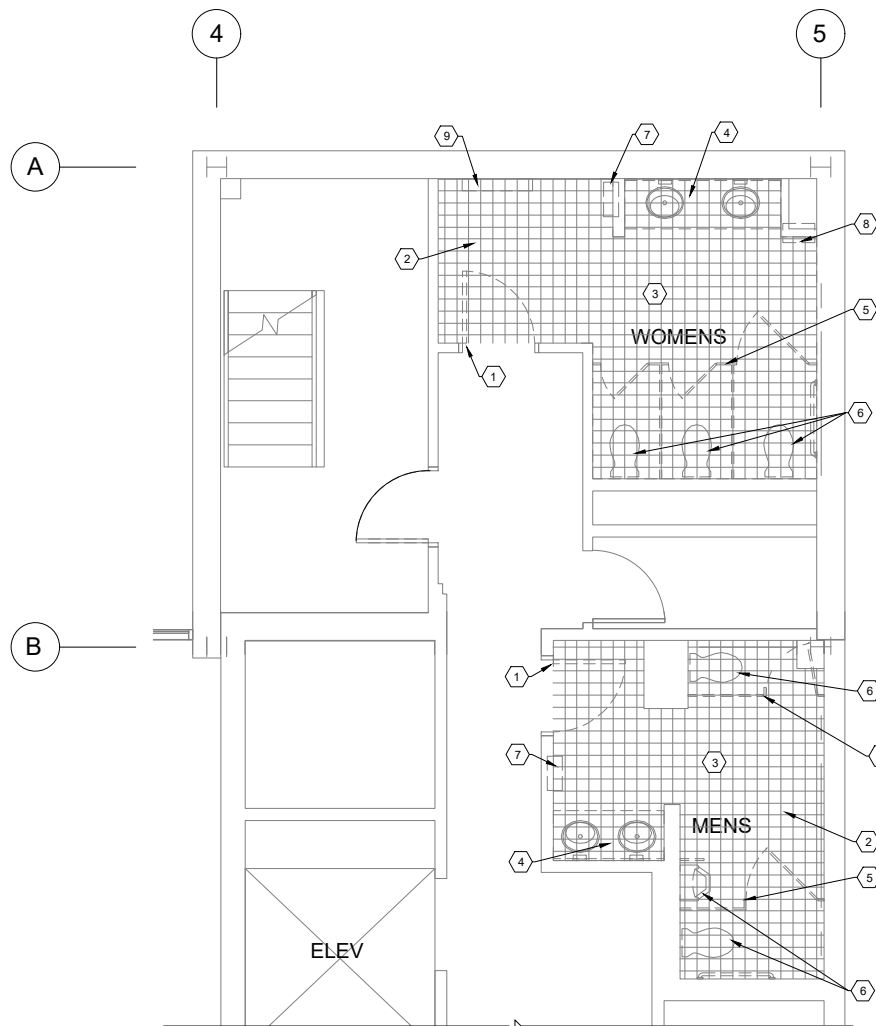
A-001



- CEILING PLAN DEMOLITION LEGEND:**
 -EXISTING TO REMAIN UNLESS OTHERWISE NOTED-
 -EXISTING SPRINKLER SYSTEM WILL REQUIRE MODIFICATION-
- REMOVE SUSPENDED 24"X24" SUSPENDED ACOUSTIC TILE CEILING ASSEMBLY @ PANELS & GRID SYSTEM
 - REMOVE LIGHT FIXTURES
 - REMOVE DIFFUSERS

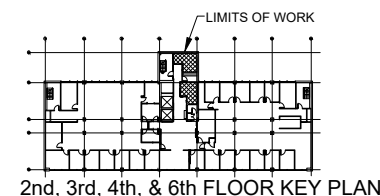
- CEILING PLAN DEMOLITION NOTES:**
- 1 MODIFY EXHAUST AIR GRILLES IN TOILET ROOMS & JANITOR CLOSET FOR FULL-FACED EXHAUST. RELOCATE EXISTING GRILLE AS NECESSARY TO FIT INTO NEW CEILING GRID.

1 CEILING PLAN - DEMOLITION
 A-101 SCALE: 1/4"=1'-0"



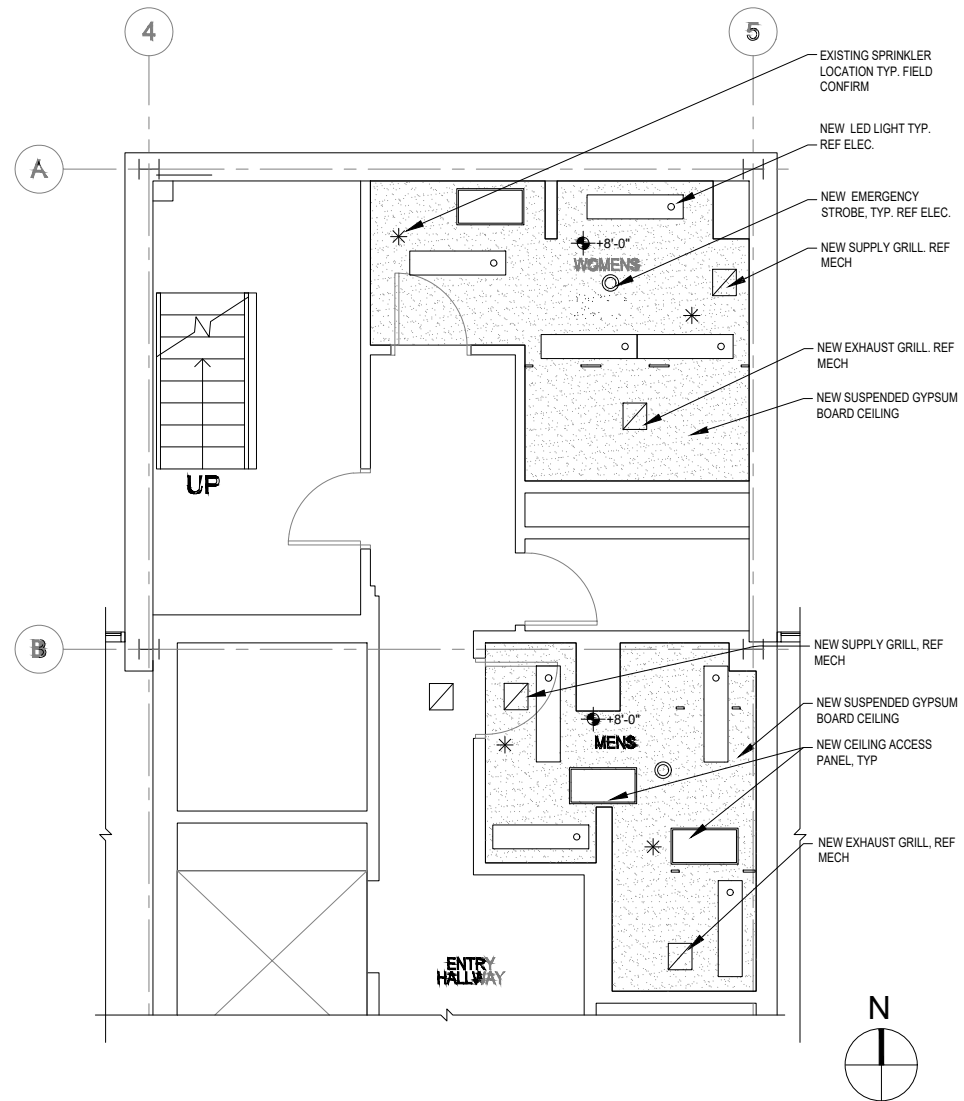
- FLOOR PLAN DEMOLITION NOTES:**
 -EXISTING TO REMAIN UNLESS OTHERWISE NOTED-
 -PREP EXISTING SURFACES FOR NEW WORK-
- 1 REMOVE DOOR ASSEMBLY (DR, FRAME, HINGE)
 - 2 REMOVE CERAMIC TILE FLOORING
 - 3 REMOVE EXISTING CERAMIC WALL TILE & SUBSTRATE (ENTIRE ROOM) TO EXPOSE EXISTING STUDS TO REMAIN
 - 4 REMOVE SINKS & COUNTER INCLUDING WALL MIRROR & SOAP DISPENSERS
 - 5 REMOVE TOILET PARTITIONS & ACCESSORIES
 - 6 REMOVE TOILET FIXTURES
 - 7 REMOVE PTDMWR (RECESSED)
 - 8 REMOVE SN DISPENSER
 - 9 REMOVE CHANGING TABLE

2 FLOOR PLAN - DEMOLITION
 A-101 SCALE: 1/4"=1'-0"

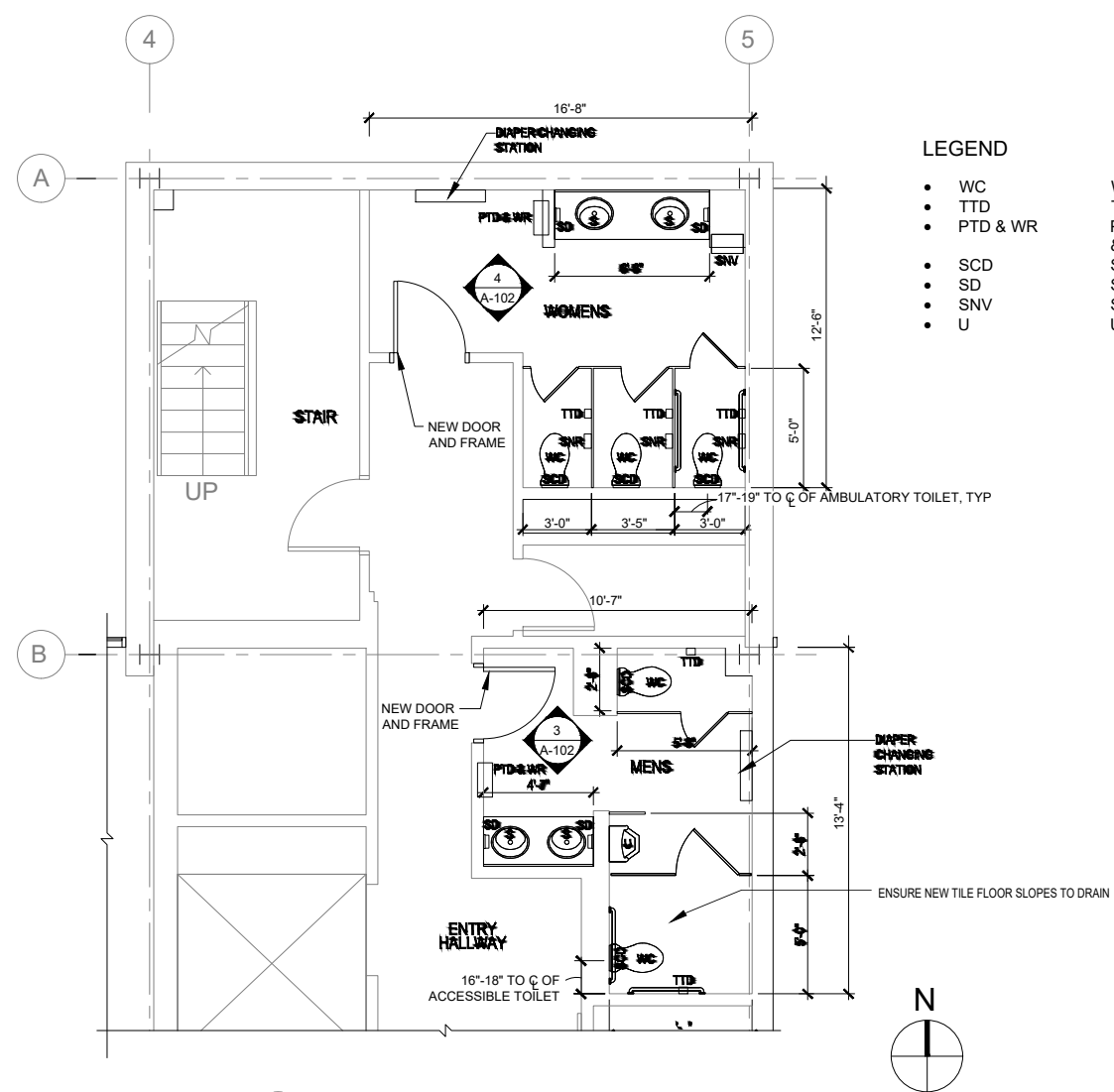


REVISIONS & ADDENDUMS		
#	DATE	REMARKS

MANAGEMENT		TRP
DESIGNED	TRP	
DRAWN	TRP	
CHECKED	JFC	
APPROVED	TRP	
LAST EDIT	4/28/21	
PLOT DATE	4/28/21	
SUBMITTAL	04/28/21	



1 CEILING PLAN - RENOVATION
A-102 SCALE: 1/4"=1'-0"

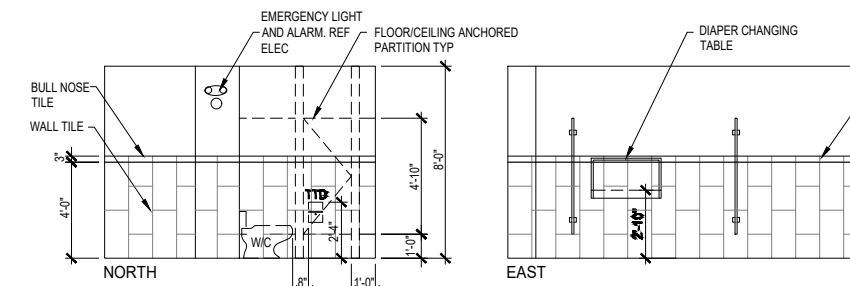


2 FLOOR PLAN - RENOVATION
A-102 SCALE: 1/4"=1'-0"

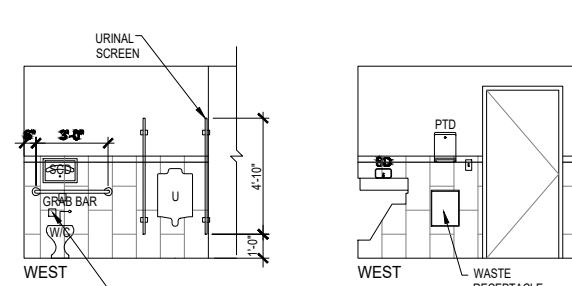
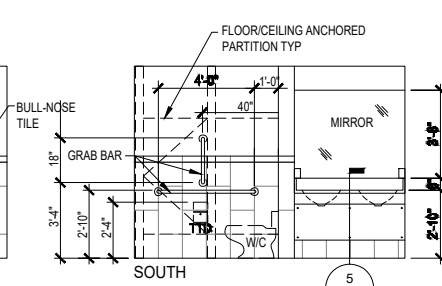
LEGEND

- WC
- TTD
- PTD & WR
- SCD
- SD
- SNV
- U

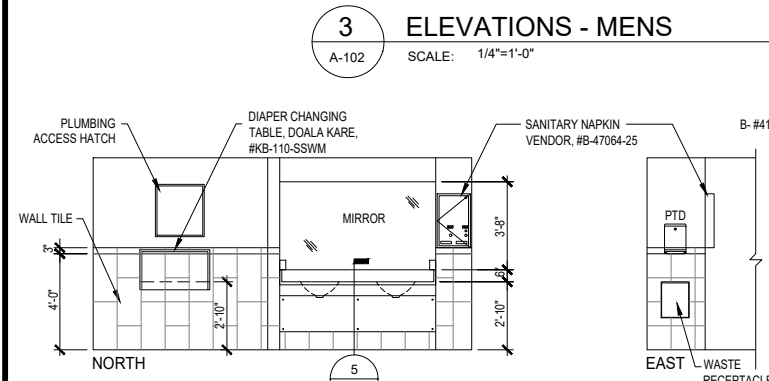
WATER CLOSET
TOILET PAPER DISPENSER
PAPER TOWEL DISPENSER
& WASTE RECEPTACLE
SEAT COVER DISPENSER
SOAP DISPENSER
SANITARY NAPKIN VENDOR
URINAL



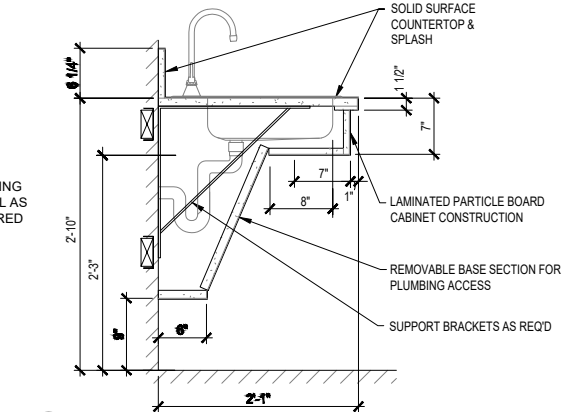
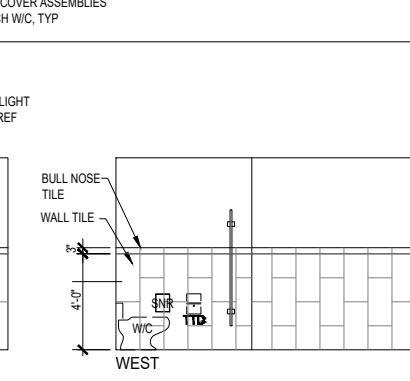
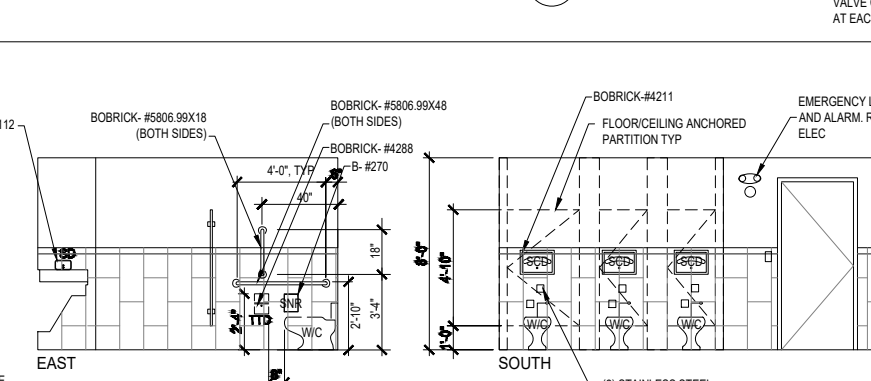
3 ELEVATIONS - MENS
A-102 SCALE: 1/4"=1'-0"



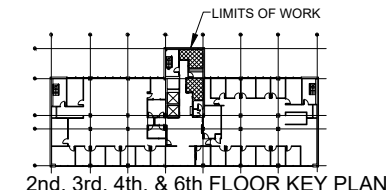
5
A-102



4 ELEVATIONS - WOMENS
A-102 SCALE: 1/4"=1'-0"

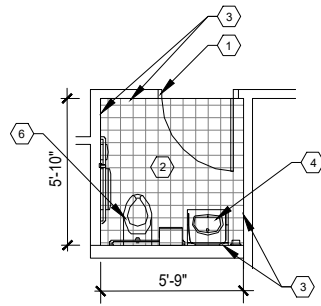


5 ACCESSIBLE SINK COUNTER
A-102 SCALE: 1"=1'-0"



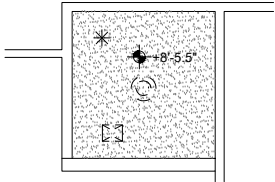
REVISIONS & ADDENDUMS		
#	DATE	REMARKS
1	04-07-2021	REV PER PLAN REVIEW COMMENTS
2	04-25-2021	REV PER PLAN REVIEW COMMENTS

MANAGEMENT		
DESIGNED	TRP	TRP
DRAWN	TRP	TRP
CHECKED	JFC	JFC
APPROVED	TRP	TRP
LAST EDIT	4/28/21	4/28/21
PLOT DATE	4/28/21	4/28/21
SUBMITTAL	4/28/21	4/28/21



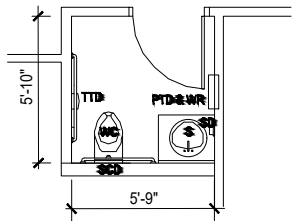
- FLOOR PLAN DEMOLITION NOTES:**
~~EXISTING TO REMAIN UNLESS OTHERWISE NOTED~~
~~PREP EXISTING SURFACES FOR NEW WORK~~
- 1 REMOVE DOOR ASSEMBLY (DP, FRAME, HINGES)
 - 2 REMOVE CERAMIC TILE FLOORING
 - 3 REMOVE EXISTING CERAMIC WALL TILE & SUBSTRATE (ENTIRE ROOM) TO EXPOSE EXISTING STUDS TO REMAIN
 - 4 REMOVE SINKS & COUNTER INCLUDING WALL MIRROR & SOAP DISPENSERS
 - 5 REMOVE TOILET FIXTURE, PTD, EXISTING GRAB BARS, AND SEAT COVER DISPENSER

1 FLOOR PLAN - DEMOLITION
A-103 SCALE: 1/4"=1'-0"



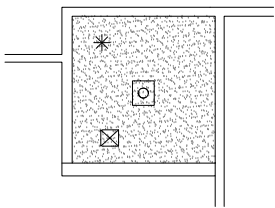
- CEILING PLAN DEMOLITION LEGEND:**
~~EXISTING TO REMAIN UNLESS OTHERWISE NOTED~~
- 1 REMOVE LIGHT FIXTURES
 - 2 REMOVE DIFFUSERS

2 CEILING PLAN - DEMOLITION
A-103 SCALE: 1/4"=1'-0"



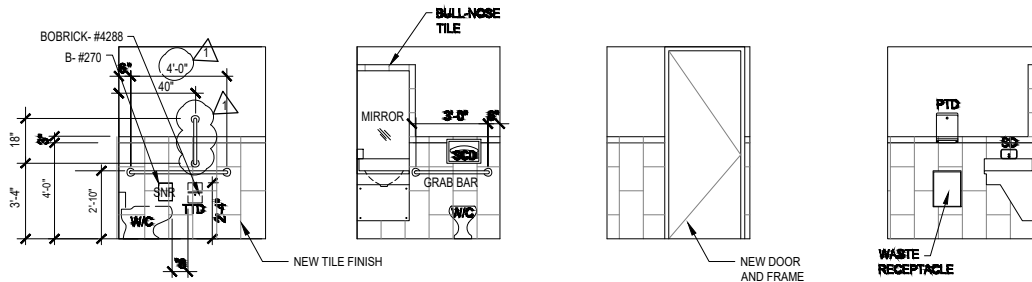
- LEGEND**
- WC WATER CLOSET
 - TTD TOILET PAPER DISPENSER
 - PTD & WR PAPER TOWEL DISPENSER & WASTE RECEPTACLE
 - SCD SEAT COVER DISPENSER
 - SNV SANITARY NAPKIN VENDOR
 - U URINAL
 - SD SOAP DISPENSER

3 FLOOR PLAN - RENOVATION
A-103 SCALE: 1/4"=1'-0"

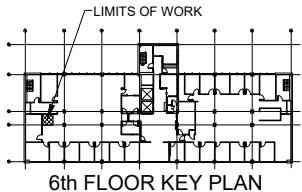


- CEILING PLAN RENOVATION LEGEND:**
- 1 NEW LIGHT FIXTURE. SEE ELEC.
 - 2 NEW DIFFUSERS. SEE MECH

4 CEILING PLAN - RENOVATION
A-103 SCALE: 1/4"=1'-0"



5 ELEVATIONS
A-103 SCALE: 1/4"=1'-0"



CHIEF PETER JOHN TRIBAL BUILDING
TANANA CHIEFS CONFERENCE
6TH FLOOR UNISEX BATHROOM DEMOLITION AND
NEW PLANS, AND ELEVATIONS

PROJECT NUMBER 165.030307
DRAWING FILE NAME TCC_ELECTRICAL_RESTROOM_PLANS
DRAWING SCALE AS SHOWN

SHEET NUMBER
A-103

REVISIONS & ADDENDUMS		REMARKS
#	DATE	REV PER PLAN REVIEW COMMENTS
1	04-07-2021	

MANAGEMENT		TRP
DESIGNED	DRAWN	TRP
CHECKED	APPROVED	JFC
LAST EDIT	PLOT DATE	4/28/21
SUBMITTAL	4/28/21	04/28/21



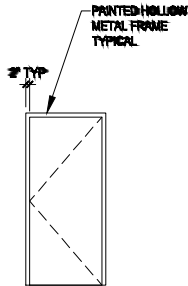
DOOR SCHEDULE

DOOR LOCATION	TYPE	SIZE	MATERIAL	HW SET #	COMMENTS
2ND FLR MEN'S RESTROOM	D1	3'-0" x 7'-0" x 1 3/4"	SCWD	01	UNDERCUT 3/4"
3RD FLR MEN'S RESTROOM	D1	3'-0" x 7'-0" x 1 3/4"	SCWD	01	UNDERCUT 3/4"
4TH FLR MEN'S RESTROOM	D1	3'-0" x 7'-0" x 1 3/4"	SCWD	01	UNDERCUT 3/4"
6TH FLR MEN'S RESTROOM	D1	3'-0" x 7'-0" x 1 3/4"	SCWD	01	UNDERCUT 3/4"
2ND FLR WOMEN'S RESTROOM	D1	3'-0" x 7'-0" x 1 3/4"	SCWD	01	UNDERCUT 3/4"
3RD FLR WOMEN'S RESTROOM	D1	3'-0" x 7'-0" x 1 3/4"	SCWD	01	UNDERCUT 3/4"
4TH FLR WOMEN'S RESTROOM	D1	3'-0" x 7'-0" x 1 3/4"	SCWD	01	UNDERCUT 3/4"
6TH FLR WOMEN'S RESTROOM	D1	3'-0" x 7'-0" x 1 3/4"	SCWD	01	UNDERCUT 3/4"
6TH FLR UNISEX ADA RESTROOM	D1	3'-0" x 8'-3.5" x 1 3/4"	SCWD	01	UNDERCUT 3/4"

ABBREVIATIONS:
SCWD SOLIDCORE WOOD

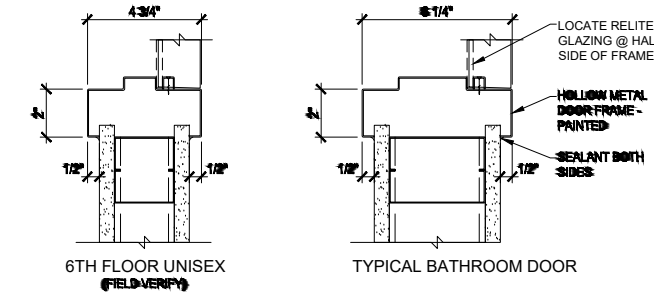
DOOR HARDWARE SCHEDULE

HW 01							
3	EA	HINGE	5881 4.5 X 4.5	662	IVE		
1	EA	PUSH PLATE	3200 4" X 16"	630	IVE		
1	EA	PULL PLATE	3302 6" 4" X 16"	630	IVE		
1	EA	SURFACE CLOSER	4040 KP TOWNS	606	LEN		
1	EA	KICK PLATE	3400 16" X 2" LOW	630	IVE		
1	EA	WALL STOP	WS401CCV	626	IVE		
1	EA	SILENCER	SR64	674	IVE		



D1
FLUSH

DOOR / FRAME TYPES



ROOM FINISH SCHEDULE

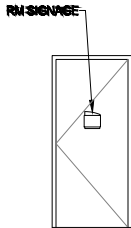
ROOM	ROOM NAMES	FLOOR	BASE	NORTH WALL	EAST WALL	SOUTH WALL	WEST WALL	DOOR FRAME	CEILING FINISH	MILLWORK	COMMENTS
2ND FLR 3RD FLR 4TH FLR 6TH FLR	MEN'S RESTROOM	T-1	T-2	T-2 / T-3 / P-1	T-2 / T-3 / P-1	T-2 / T-3 / P-1	T-2 / T-3 / P-1	P-4	P-1	SS-2 COUNTER TOP & BACKSPLASH	PROVIDE NEW TOILET PARTITIONS
2ND FLR 3RD FLR 4TH FLR 6TH FLR	WOMEN'S RESTROOM	T-1	T-2	T-2 / T-3 / P-1	T-2 / T-3 / P-1	T-2 / T-3 / P-1	T-2 / T-3 / P-1	P-4	P-1	SS-2 COUNTER TOP & BACKSPLASH	PROVIDE NEW TOILET PARTITIONS
6TH FLR	UNISEX'S ADA RESTROOM	T-1	T-2	T-2 / T-3 / P-1	T-2 / T-3 / P-1	T-2 / T-3 / P-1	T-2 / T-3 / P-1	P-4	P-1	SS-2 COUNTER TOP & BACKSPLASH	PROVIDE NEW TOILET PARTITIONS

MATERIAL FINISH LEGEND

ITEM	DESCRIPTION	MANUFACTURER	SERIES	COLOR/PATTERN	NOTES
P-1	INTERIOR WALL PAINT	SHERWIN WILLIAMS	EGGSHEL/SATIN	KILIM BEIGE, SW 6106	
P-4	HM DOOR FRAME PAINT	SHERWIN WILLIAMS	SEMI GLOSS	NOMADIC DESERT, SW 6107	
SS-2	SOLID SURFACE COUNTERTOP	AVONITE	STUDIO COLLECTION	K3-8343, PEARL	
T-1	FLOOR TILE	DAL TILE	FABRIQUE	GRIS LINEN, P690	UN POLISHED 12X12
T-2	WALL TILE	DAL TILE	FABRIQUE	CREME LINEN, P686	LIGHT POLISHED 12X24, 48" HIGH WAINSCOT
T-3	WALL TILE - BULL NOSE	DAL TILE	FABRIQUE	CREME LINEN, S-43C9	LIGHT POLISHED 3X12 ON TOP OF WAINSCOT
TP	TOILET PARTITIONS	ASI GLOBAL PARTITIONS	STAINLESS STEEL	LEATHER FINISH	

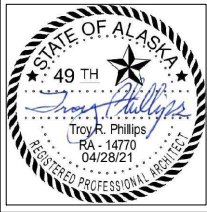
GENERAL NOTES:
MEN'S & WOMEN'S RESTROOMS TO EACH RECEIVE KOALA KARE, BABY CHANGING STATION, HORIZONTAL STAINLESS STEEL WALL MOUNTED, MODEL # KB-110-SSWH

INTERIOR ROOM SIGNAGE TO BE APCO, ELEMENTS 2, ARC-ART, L02 COASTAL GRASS



ROOM SIGN SCHEDULE

ROOM #	ROOM NAME	APCO, ELEMENTS 2, ARC-AR1, L02 COASTAL GRASS	NOTES
201 301 401 601	MEN	-	6" VERTICAL PICTORGRAM W/ ROOM NAME & BRAILLE BELOW
202 302 402 602	WOMEN	-	6" VERTICAL PICTORGRAM W/ ROOM NAME & BRAILLE BELOW



REVISIONS & ADDENDUMS		REMARKS	
#	DATE		

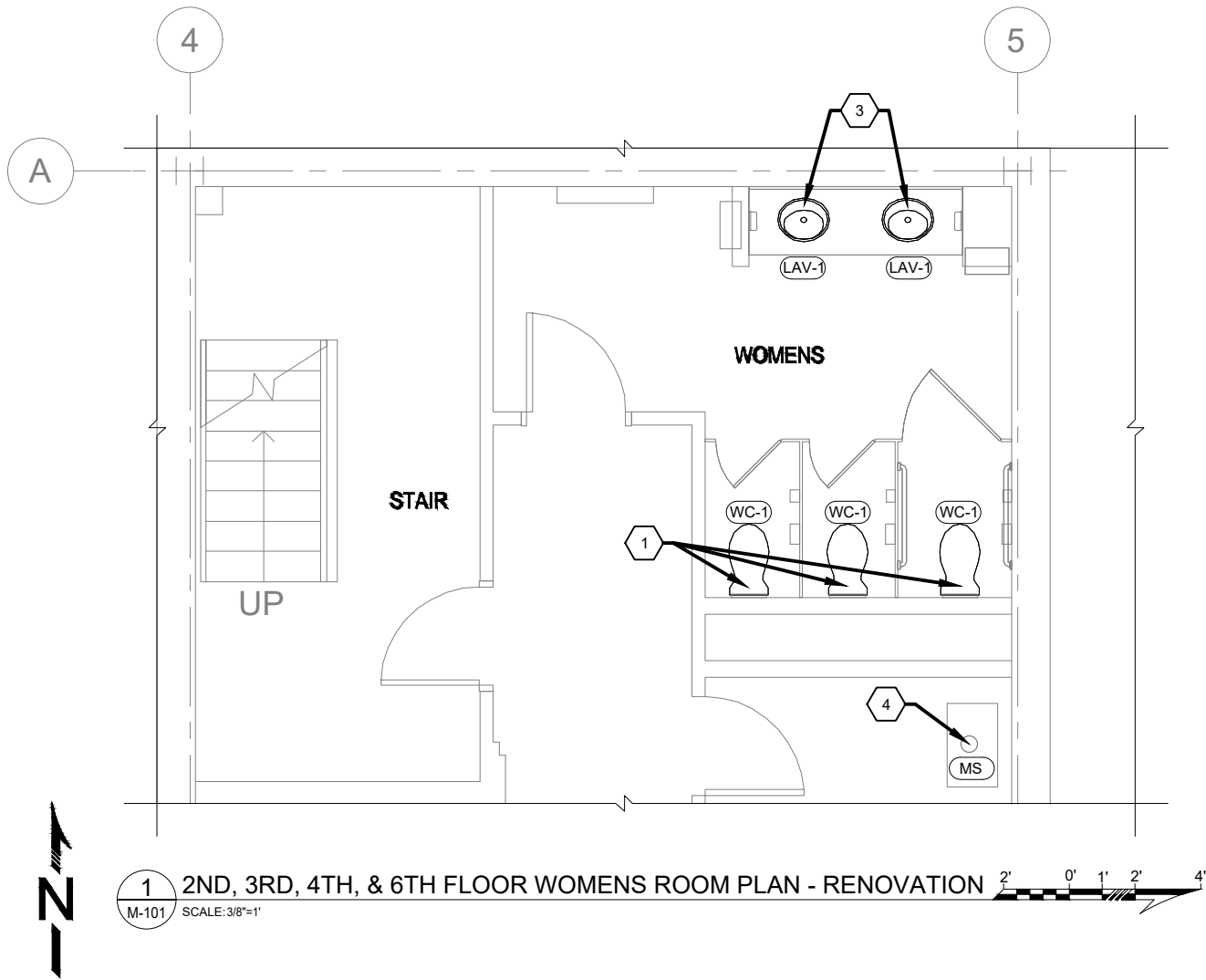
MANAGEMENT		TRP	TRP	JFC	TRP	4/28/21	4/28/21	4/28/21
DESIGNED	TRP							
DRAWN	TRP							
CHECKED	JFC							
APPROVED	TRP							
LAST EDIT	4/28/21							
PLOT DATE	4/28/21							
SUBMITTAL	04/28/21							

CHIEF PETER JOHN TRIBAL BUILDING
TANANA CHIEFS CONFERENCE
ARCHITECTURAL FINISH SCHEDULE
AND DOOR SCHEDULE

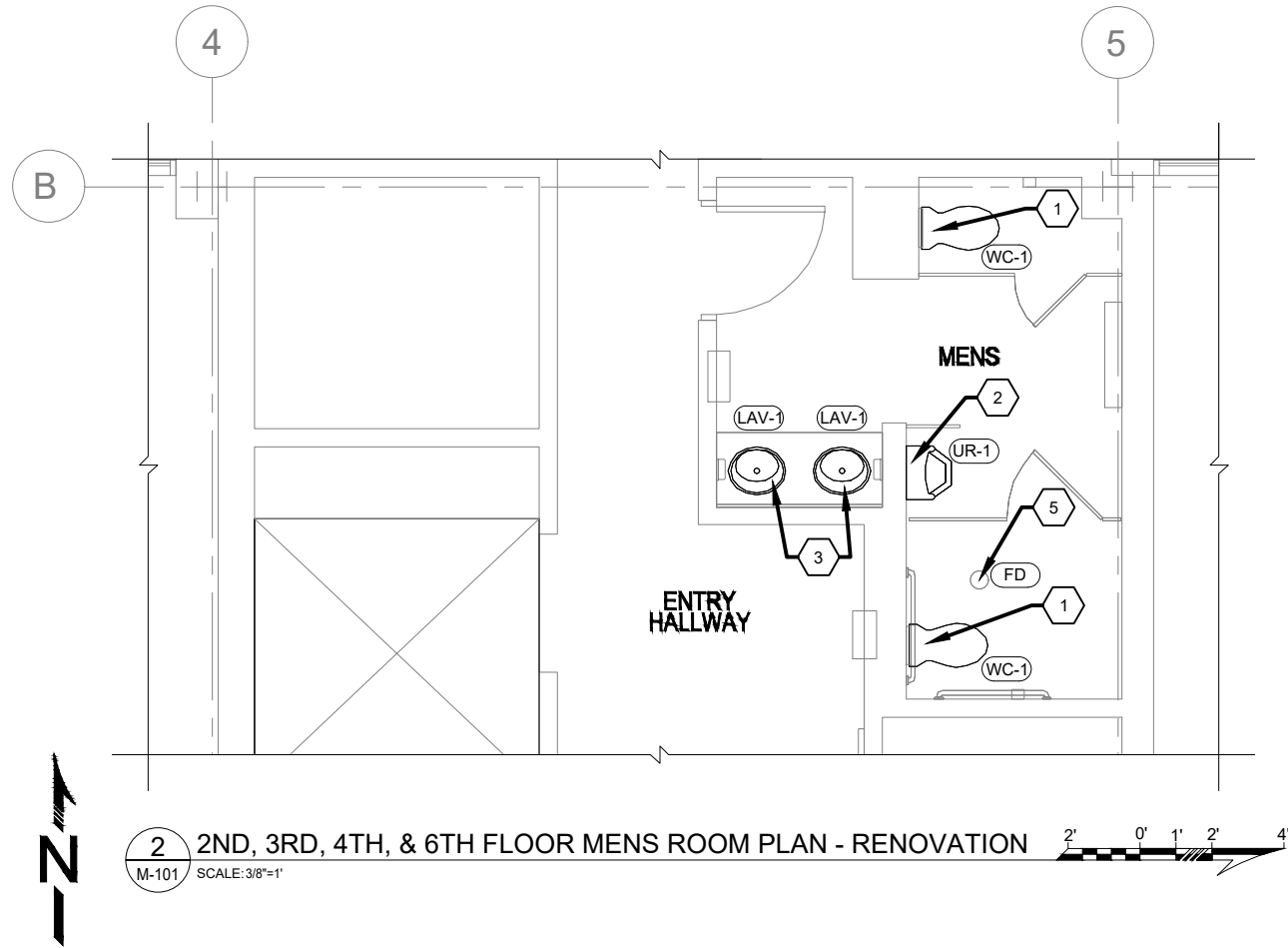
PROJECT NUMBER
165.030307

DRAWING FILE NAME

DRAWING SCALE
AS SHOWN



1 2ND, 3RD, 4TH, & 6TH FLOOR WOMENS ROOM PLAN - RENOVATION
M-101 SCALE: 3/8"=1'



2 2ND, 3RD, 4TH, & 6TH FLOOR MENS ROOM PLAN - RENOVATION
M-101 SCALE: 3/8"=1'

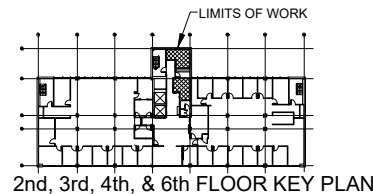
PLUMBING FIXTURE CONNECTION SCHEDULE

TAG	FIXTURE	MOUNTING	TRAP (IN)	WASTE (IN)	VENT (IN)	CW (IN)	HW (IN)	FIXTURE - DESIGN BASIS PRODUCT			FAUCET/ VALVE - DESIGN BASIS PRODUCT		NOTES
								MFR.	MODEL	MATERIAL	MFR.	MODEL	
WC-1	ADA WATER CLOSET	WALL	-	4	2	1	-	AMER. STD.	3351001	VITREOUS CHINA	SLOAN	OPTIMA 111-1.28	1.28 GPF, ELONGATED BOWL, ADA HEIGHT, EVERCLEAN SURFACE, PROVIDE WITH SEAT-BASIS OF DESIGN IS AMERICAN STANDARD 5905110.
UR-1	URINAL	WALL	-	2	1 1/2	3/4	-	AMER. STD.	6042.005	VITREOUS CHINA	SLOAN	G2 OPTIMA PLUS	0.5 GPF, TOP SPUD, EVERCLEAN SURFACE, EXPOSED CHROME PLATED BATTERY POWERED SENSOR OPERATED W/ OVERRIDE BUTTON
LAV-1	LAVATORY	COUNTER	1 1/4	1 1/4	1 1/4	1/2	1/2	AMER. STD.	9494001	VITREOUS CHINA	SLOAN	SF-2150-4	DROP-IN SINK, ADA COMPLIANT, P-TRAP, STOP AND SUPPLIES, SHIELDING GUARDS. 0.5 GPM AUTOMATIC FAUCET, BATTERY OPERATED, BELOW DECK THERMOSTATIC MIXING VALVE, ADJUST TO PROVIDE 105°F WATER TO FAUCET

KEYED NOTES:



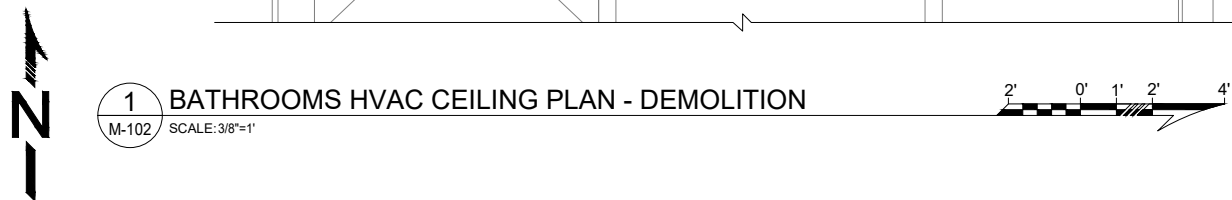
1. REMOVE EXISTING WATER CLOSET. INSTALL NEW WATER CLOSET, CONNECT TO EXISTING WASTE AND VENT PIPING.
2. REMOVE EXISTING URINAL. INSTALL NEW URINAL, CONNECT TO EXISTING WATER, WASTE, AND VENT PIPING, EXTEND PIPING AS NEEDED.
3. REMOVE EXISTING LAVATORY. INSTALL NEW LAVATORY, CONNECT TO EXISTING WASTE AND VENT PIPING.
4. EXISTING MOP SINK IN JANITOR CLOSET TO REMAIN AS-IS.
5. EXISTING FLOOR DRAIN IN MEN'S ROOM TO REMAIN AS-IS. INCLUDE NEW BRUSHED NICKEL STRAINER.



REVISIONS & ADDENDUMS	
#	REMARKS

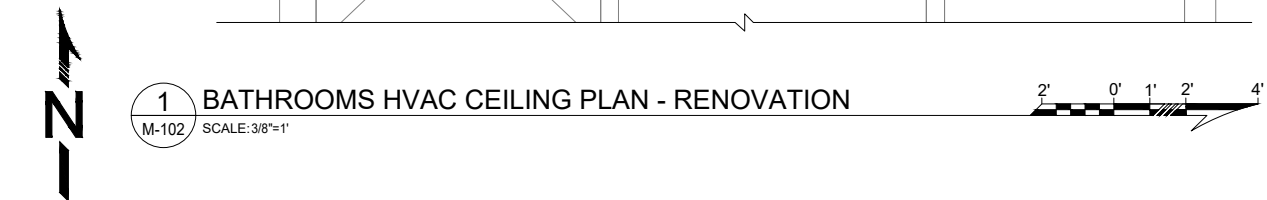
MANAGEMENT	
DESIGNED	JDD
DRAWN	JDD
CHECKED	SLS
APPROVED	-
LAST EDIT	4/28/21
PLOT DATE	4/28/21
SUBMITTAL	04/28/21

GRILLE SCHEDULE									
TAG	FUNCTION	TYPE	MOUNTING	MANUFACTURER	MODEL	FACE SIZE	DUCT SIZE	MATERIAL	COLOR
SD-1	SUPPLY	CEILING DIFFUSER	SURFACE	TITUS	OMNI-AA	20"X20"	8" (NOTE 2)	ALUMINUM	WHITE
EX-1	EXHAUST	PERFORATED CEILING DIFFUSER	SURFACE	TITUS	PAR	20"X20"	8" (NOTE 2)	STEEL	WHITE
TG-1	TRANSFER	PERFORATED CEILING DIFFUSER	SURFACE	TITUS	PAR	12" X 12"	10" X 10"	STEEL	WHITE



1. DEMOLISH EXISTING SLOT DIFFUSERS.
2. RECONNECT FLEXIBLE DUCTING TO NEW CEILING MOUNTED GRILLES / DIFFUSERS.
3. INSTALL TRANSFER GRILLES IN HALLWAY AND MEN'S BATHROOM, CONNECT WITH 10" x 10" DUCT WORK. CONTRACTOR TO VERIFY INSTALLATION LOCATION.

1. DEMOLITION AND RENOVATION PLANS TYPICAL FOR 2ND, 3RD, 4TH, AND 6TH FLOORS.
2. CONTRACTOR TO VERIFY EXISTING DUCTING SIZES.

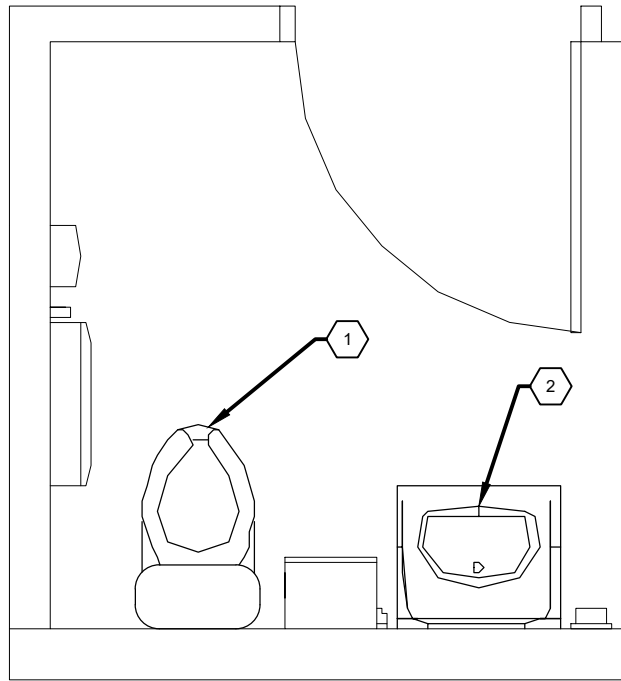
[illegible]

DESIGNED	JDD
DRAWN	JDD
CHECKED	SLS
APPROVED	-
LAST EDIT	4/28/21
PLOT DATE	4/28/21
SUBMITTAL	04/28/21

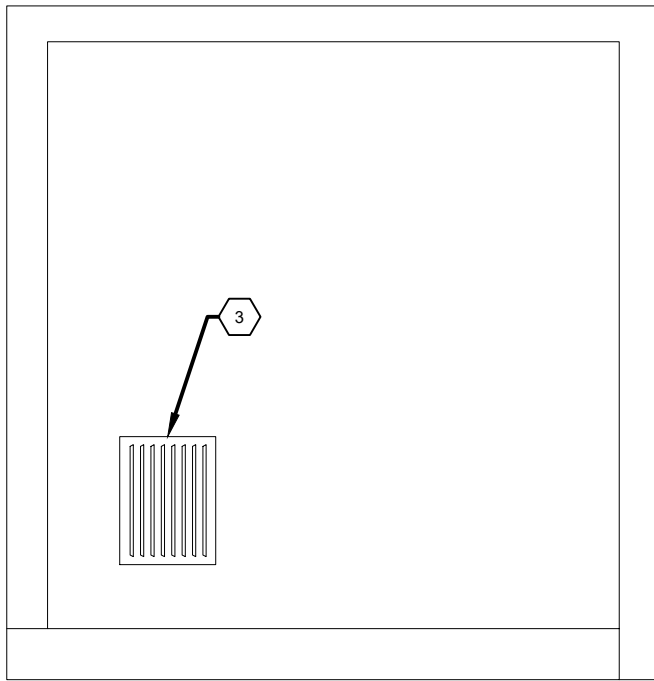
PROJECT NUMBER	DRAWING FILE NAME	DRAWING SCALE
165.030307	030307 - TCC Mechanical Restroom Plans.dwg	AS SHOWN

SHEET NUMBER

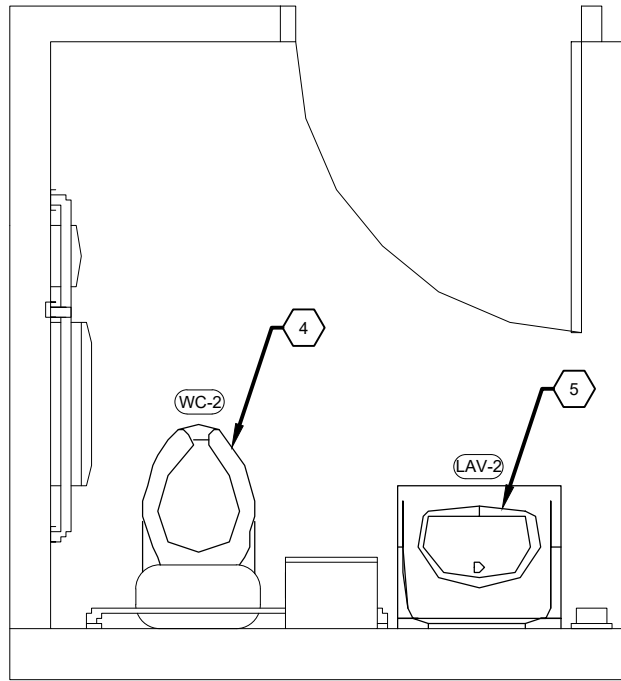
M-102



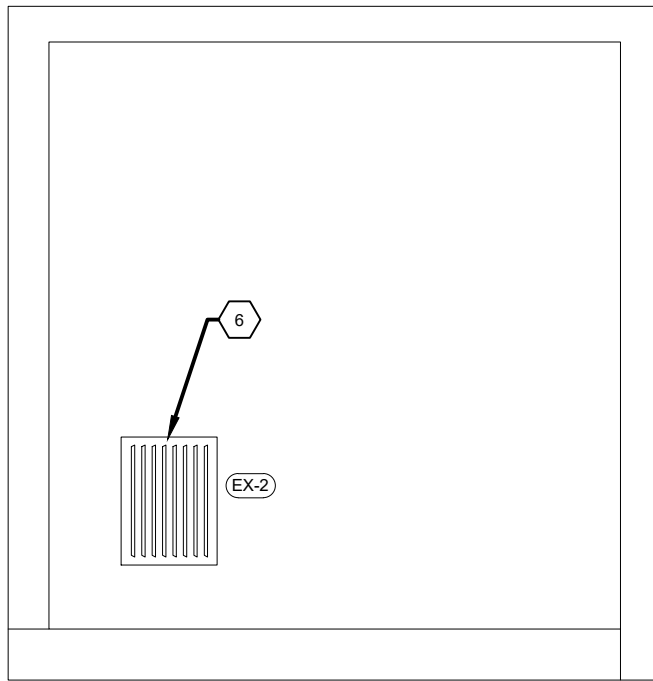
1 PLUMBING PLAN - DEMOLITION
M-103 SCALE: 1"=1'



2 HVAC PLAN - DEMOLITION
M-103 SCALE: 1"=1'



3 PLUMBING PLAN - RENOVATION
M-103 SCALE: 1"=1'



4 HVAC PLAN - RENOVATION
M-103 SCALE: 1"=1'

PLUMBING FIXTURE CONNECTION SCHEDULE													
TAG	FIXTURE	MOUNTING	TRAP (IN)	WASTE (IN)	VENT (IN)	CW (IN)	HW (IN)	FIXTURE - DESIGN BASIS PRODUCT			FAUCET/ VALVE - DESIGN BASIS PRODUCT		NOTES
								MFR.	MODEL	MATERIAL	MFR.	MODEL	
WC-2	ADA WATER CLOSET	FLOOR	-	4	2	1/2	-	AMER. STD.	211AA.104	VITREOUS CHINA	-	-	1.28 GPF, ADA HEIGHT, ELONGATED BOWL, EVERCLEAN SURFACE, FLUSH VALVE INCLUDED, PROVIDE WITH SEAT- BASIS OF DESIGN IS AMERICAN STANDARD 5321A.65CT.
LAV-2	LAVATORY	WALL	1 1/4	1 1/4	1 1/4	1/2	1/2	AMER. STD.	0356.041	VITREOUS CHINA	SLOAN	SF-2150-4	WALL MOUNT SINK, ADA COMPLIANT, P-TRAP, STOP AND SUPPLIES, SHIELDING GUARDS. 0.5 GPM AUTOMATIC FAUCET, BATTERY OPERATED, BELOW DECK THERMOSTATIC MIXING VALVE, ADJUST TO PROVIDE 105°F WATER TO FAUCET

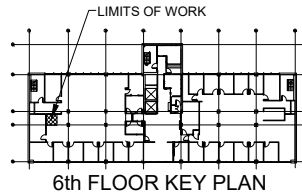
GRILLE SCHEDULE								
TAG	FUNCTION	TYPE	MOUNTING	MANUFACTURER	MODEL	FACE SIZE	DUCT SIZE	MATERIAL
EX-2	EXHAUST	PERFORATED CEILING DIFFUSER	SURFACE	TITUS	PAR	12"X12"	6"	STEEL

NOTES:

1. CONTRACTOR TO VERIFY EXISTING EXHAUST DUCT SIZE.

KEYED NOTES: #

1. DEMOLISH EXISTING WATER CLOSET.
2. DEMOLISH EXISTING LAVATORY
3. DEMOLISH EXISTING EXHAUST VENT GRILL.
4. INSTALL NEW WATER CLOSET, CONNECT TO EXISTING WASTE AND VENT PIPING.
5. INSTALL NEW LAVATORY, CONNECT TO EXISTING WASTE AND VENT PIPING.
6. INSTALL NEW EXHAUST GRILL, CONNECT TO EXISTING DUCTING.



REVISIONS & ADDENDUMS			REMARKS
#	DATE		

MANAGEMENT	JDD	JDD	SLS		4/28/21	4/28/21
	DESIGNED	DRAWN	CHECKED	APPROVED	LAST EDIT	PLOT DATE

ELECTRICAL ABBREVIATIONS

ADD	ADDITIVE
AFF	ABOVE FINISHED FLOOR
AFG	ABOVE FINAL GRADE
AIP	ABANDON IN PLACE
ALT	ALTERNATE
APPROX	APPROXIMATE
BLDG	BUILDING
CLG	CEILING
C	CONDUIT
CO	CONDUIT ONLY
CB	CIRCUIT BREAKER
CKT	CIRCUIT
CT	CURRENT TRANSFORMER
CU	COPPER
DB	DIRECT BURY
DISC	DISCONNECT
(E)	EXISTING
EGC	EQUIPMENT GROUND CONDUCTOR
EM	EMERGENCY
EMT	ELECTRICAL METALLIC TUBING
ETR	EXISTING TO REMAIN
GEC	GROUNDING ELECTRODE CONDUCTOR
GFCI	GROUND FAULT CIRCUIT INTERRUPTER
GRND	GROUND
H	HOT OR HEIGHT
IMC	INTERMEDIATE METAL CONDUIT
LCC	LIGHTING CONTROLS CONTACTOR
LFMC	LIQUID-TITE FLEX METAL CONDUIT
MBJ	MAIN BONDING JUMPER
MCB	MAIN CIRCUIT BREAKER
MDP	MAIN DISTRIBUTION PANEL
MH	MOUNTING HEIGHT
MLO	MAIN LUG ONLY
MOM	MOMENTARY
MTS	MANUAL TRANSFER SWITCH
N	NEUTRAL
N/A	NOT APPLICABLE
NC	NORMALLY CLOSED
N.O.	NORMALLY OPEN
NFS	NON-FROST SUSCEPTIBLE
NIC	NOT IN CONTRACT
NL	NIGHT LIGHT
NTS	NOT TO SCALE
OC	ON CENTER
PA	PUBLIC ADDRESS
RMC	RIGID METAL CONDUIT
SW	SWITCH
TR	TAMPER RESISTANT
UON	UNLESS OTHERWISE NOTED
WG	WIRE GUARD
WP	WEATHER-PROOF

LIGHTING

A	LETTER(S) INDICATE LIGHT FIXTURE TYPE
	LIGHT FIXTURE, SURFACE MOUNT
	LIGHT FIXTURE, RECESS MOUNT
	EMERGENCY LIGHT FIXTURE, SURFACE MOUNT
	EMERGENCY LIGHT FIXTURE, RECESS MOUNT
	NIGHT LIGHT FIXTURE, SURFACE MOUNT
	NIGHT LIGHT FIXTURE, RECESS MOUNT
	NIGHT/EMERGENCY LIGHT FIXTURE, SURFACE MOUNT
	NIGHT/EMERGENCY LIGHT FIXTURE, RECESS MOUNT
	LIGHT FIXTURE, WALL MOUNT
	SURFACE CEILING MOUNTED LIGHT FIXTURE
	WALL MOUNTED LIGHT FIXTURE
	RECESSED CEILING WALL-WASH FIXTURE
	RECESSED CEILING MOUNTED LIGHT FIXTURE
	PENDANT LIGHT FIXTURE
	EXIT SIGN, CEILING MOUNT, ARROW INDICATES DIRECTION
	EXIT SIGN, WALL MOUNT , ARROW INDICATES DIRECTION
	OCCUPANCY SENSOR, LETTER DENOTES TYPE A = INFRARED, WALL-SWITCH MOUNT C = ULTRASONIC, CEILING MOUNT G = INFRARED, WALL AND CEILING MOUNT, FOR AIR HANDLER UNIT CONTROL IN CONJUNCTION WITH HAZARDOUS GAS DETECTION SYSTEM
	LIGHT SWITCH NO LETTER = SINGLE-POLE SWITCH 2 = 2-WAY SWITCH 3 = 3-WAY SWITCH 4 = 4-WAY SWITCH K = KEY OPERATED SWITCH

POWER / CONTROL

	DUPLEX RECEPTACLE, GFCI TYPE
	DUPLEX RECEPTACLE, WALL/FLOOR MOUNTED
	DOUBLE DUPLEX RECEPTACLE, WALL/FLOOR MOUNTED
	MULTI-OUTLET SURFACE RACEWAY ASSEMBLY
	CONTROL OR TERMINAL CABINET, TYPE AS NOTED
	PANELBOARD, SURFACE/FLUSH MOUNTED
	JUNCTION BOX
	EQUIPMENT CONNECTION
	THERMOSTAT
	CONDUIT STUBBED & CAPPED OR BUSHED AS NOTED
	RACEWAY UP
	RACEWAY DOWN
	UNDERGROUND OR UNDER FLOOR CIRCUIT
	CIRCUIT CONCEALED / ABOVE CEILING
	BRANCH CIRCUIT HOMERUN
	INDICATES PANEL AND CIRCUIT NUMBER

COMMUNICATIONS

	WALL/FLOOR MOUNTED DATA OUTLET, SUBSCRIPT DENOTES NUMBER OF OUTLETS PER JUNCTION BOX (DEFAULT, ONE)
	WALL/FLOOR MOUNTED TELEPHONE OUTLET, SUBSCRIPT DENOTES NUMBER OF OUTLETS PER JUNCTION BOX (DEFAULT, ONE)
	WALL/FLOOR MOUNTED COMBINATION DATA AND TELEPHONE OUTLET, SUBSCRIPT DENOTES NUMBER OF DATA OUTLETS PER JUNCTION BOX (DEFAULT, ONE)

	TELEVISION OUTLET
	SPEAKER, WALL/CEILING MOUNTED
	TIME CLOCK
	EMPLOYEE TIME CLOCK

FIRE ALARM

	FIRE ALARM PULL STATION
	PHOTOELECTRIC SMOKE DETECTOR, "I" DENOTES IONIZATION
	FIRE ALARM HORN/STROBE
	FIRE ALARM HORN/STROBE, CEILING MOUNTED
	FIRE ALARM STROBE
	DOOR HOLD

NOTATION

	REFERENCE TO SHEET NOTE
	REFERENCE TO REVISION

DRAWING CONVENTION

	NEW ELECTRICAL ITEMS ARE TYPICALLY INDICATED BY SOLID & BOLD LINES, UNLESS OTHERWISE NOTED. EXISTING
	DEMOLISHED ELECTRICAL ITEMS ARE TYPICALLY INDICATED BY DASHED & LIGHTWEIGHT LINES, UNLESS OTHERWISE NOTED.

LUMINAIRE SCHEDULE

QTY	TYPE	ELECTRICAL		DESCRIPTION	LAMPS	MOUNTING	MANUFACTURER	MODEL	NOTES
		WATTS	VOLTAGE						
33	SL1	36	277	SURFACE LINEAR LED WRAP	3500K LED	CEILING SURFACE	AXIS	PWSLED 1000 80 35 S 4 W UNV DP 1 S	
8	E2	2.4	277	WALL MOUNT EMERGENCY AREA LIGHT	2.4W LED	+7'6" AFF	LITHONIA	ELM2L M12	

GENERAL NOTES:	
A.	VERIFY CEILING TYPES THROUGHOUT. PROVIDE ALL MOUNTING HARDWARE AS RECOMMENDED BY THE LIGHTING MANUFACTURER FOR SPECIFIC CEILING TYPES.
B.	COORDINATE ALL FIXTURE MOUNTING LOCATIONS WITH OTHER TRADES PRIOR TO INSTALLATION TO ENSURE THAT CONFLICTS DO NOT EXIST. WHERE CONFLICTS EXIST, NOTIFY ENGINEER.
C.	LIGHT FIXTURE PACKAGE TO GENERALLY MATCH OWNER'S SUPPLIED SAMPLE DRAWINGS. SUBMIT FULL LIGHTING PACKAGE FOR OWNER REVIEW.
NUMBERED NOTES:	
1	

ELECTRICAL SERVICE LOAD:

1. NET CHANGE TO LOAD ON BUILDING SERVICE IS A DECREASE OF 1,385 WATTS, 1.88A AT 480V.

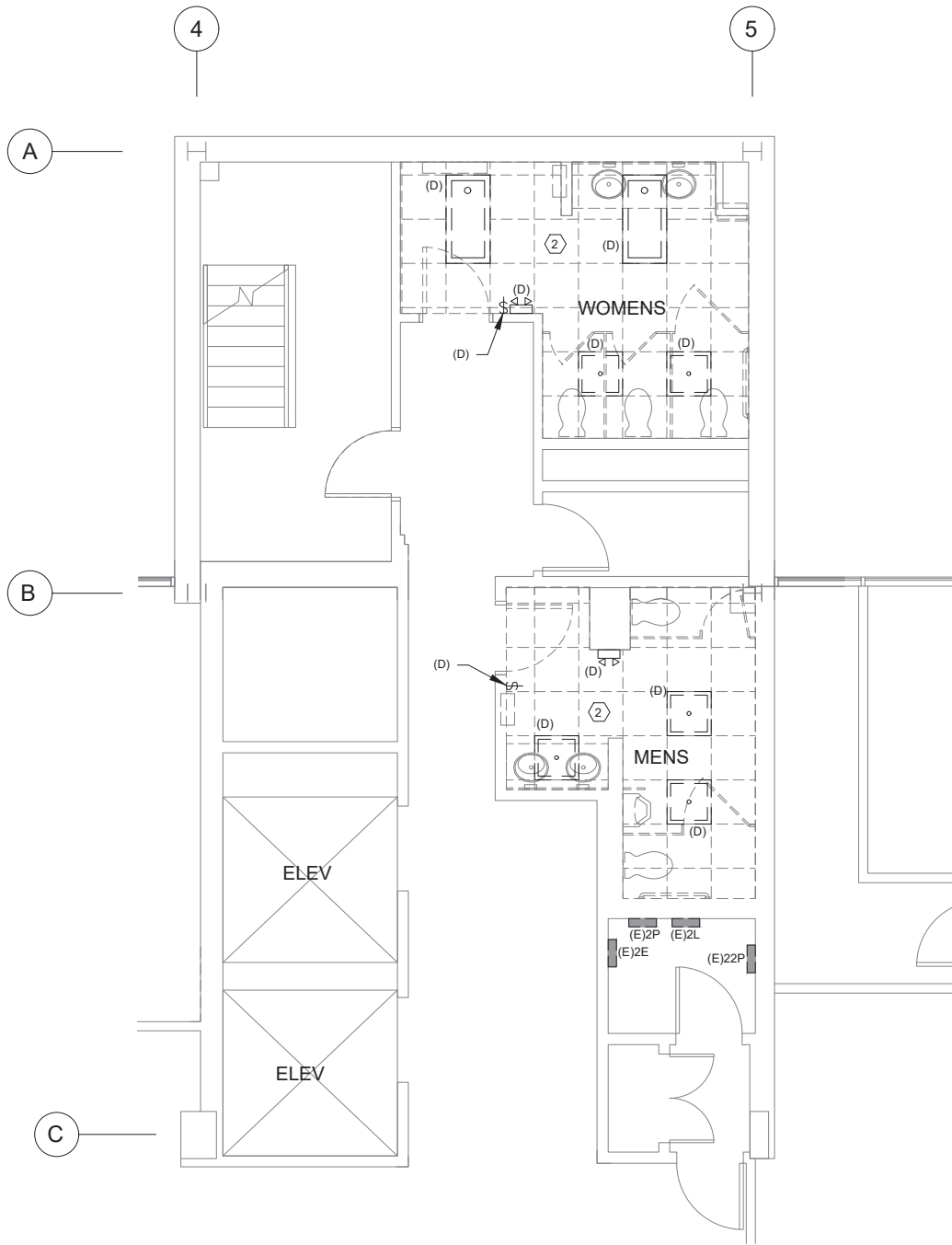
EXISTING LIGHTING REMOVED: (2,296W x 125% CONTINUOUS)	2,870 W
NEW LIGHTING ADDED: (1,188W x 125% CONTINUOUS)	1,485 W



REVISIONS & ADDENDUMS		REMARKS	
		#	DATE

MANAGEMENT	DESIGNED	SLKB
	DRAWN	SLKB
	CHECKED	AHW
	APPROVED	AHW
	LAST EDIT	4/28/21
	PLOT DATE	4/28/21
	SUBMITTAL	04/28/21

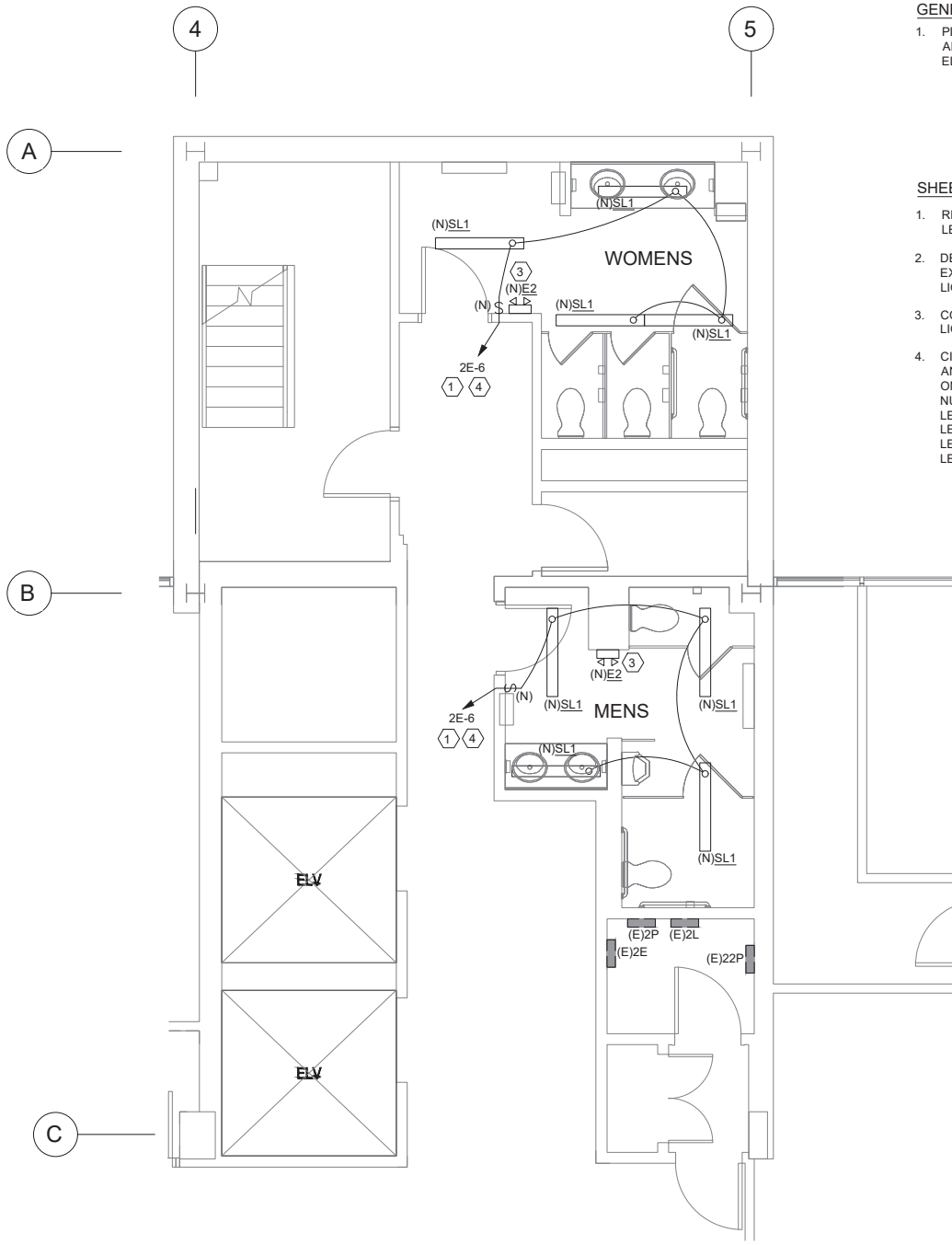
CHIEF PETER JOHN TRIBAL BUILDING TANANA CHIEFS CONFERENCE ELECTRICAL LEGEND ABBREVIATIONS AND SCHEDULE			DRAWING SCALE AS SHOWN
PROJECT NUMBER 165.030307	DRAWING FILE NAME TCC_ELECTRICAL_RESTROOM_PLANS		



1
E-101

LIGHTING PLAN - DEMOLITION

SCALE: 1/4"=1'-0"



2
E-101

LIGHTING PLAN - NEW

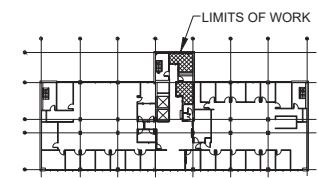
SCALE: 1/4"=1'-0"

GENERAL NOTES:

1. PLAN VIEW SHOWN IS TYPICAL OF FLOORS 2, 3, 4, AND 6. THERE ARE SLIGHT VARIATIONS OF ELECTRICAL ROOM LAYOUT ON EACH FLOOR.

SHEET NOTES: (X)

1. RECONNECT TO EXISTING CIRCUIT. LIGHTING IS LED AND LOAD IS REDUCED
2. DEMOLISH ALL LIGHTING IN ROOM. SALVAGE EXISTING CIRCUIT FOR RECONNECTION TO NEW LIGHTING.
3. CONNECT EMERGENCY LIGHT TO LOCAL AREA LIGHTING CIRCUIT AHEAD OF ANY SWITCHES.
4. CIRCUIT SHOWN IS TAKEN FROM PANEL SCHEDULE AND IS INTENDED FOR CONTRACTOR CONVENIENCE ONLY. FIELD VERIFY CIRCUIT NUMBER. CIRCUIT NUMBERS FOR TYPICAL BATHROOM ON OTHER LEVELS ARE AS FOLLOWS:
LEVEL 3 = 3E-12
LEVEL 4 = 4E-5
LEVEL 6 = 6E-1



2nd, 3rd, 4th, & 6th FLOOR KEY PLAN

REVISIONS & ADDENDUMS

#	DATE	REMARKS

MANAGEMENT

DESIGNED	SLKB
DRAWN	SLKB
CHECKED	AHW
APPROVED	AHW
LAST EDIT	4/28/21
PLOT DATE	4/28/21
SUBMITTAL	04/28/21

CHIEF PETER JOHN TRIBAL BUILDING
TANANA CHIEFS CONFERENCE
ELECTRICAL LIGHTING PLANS
DEMOLITION AND NEW

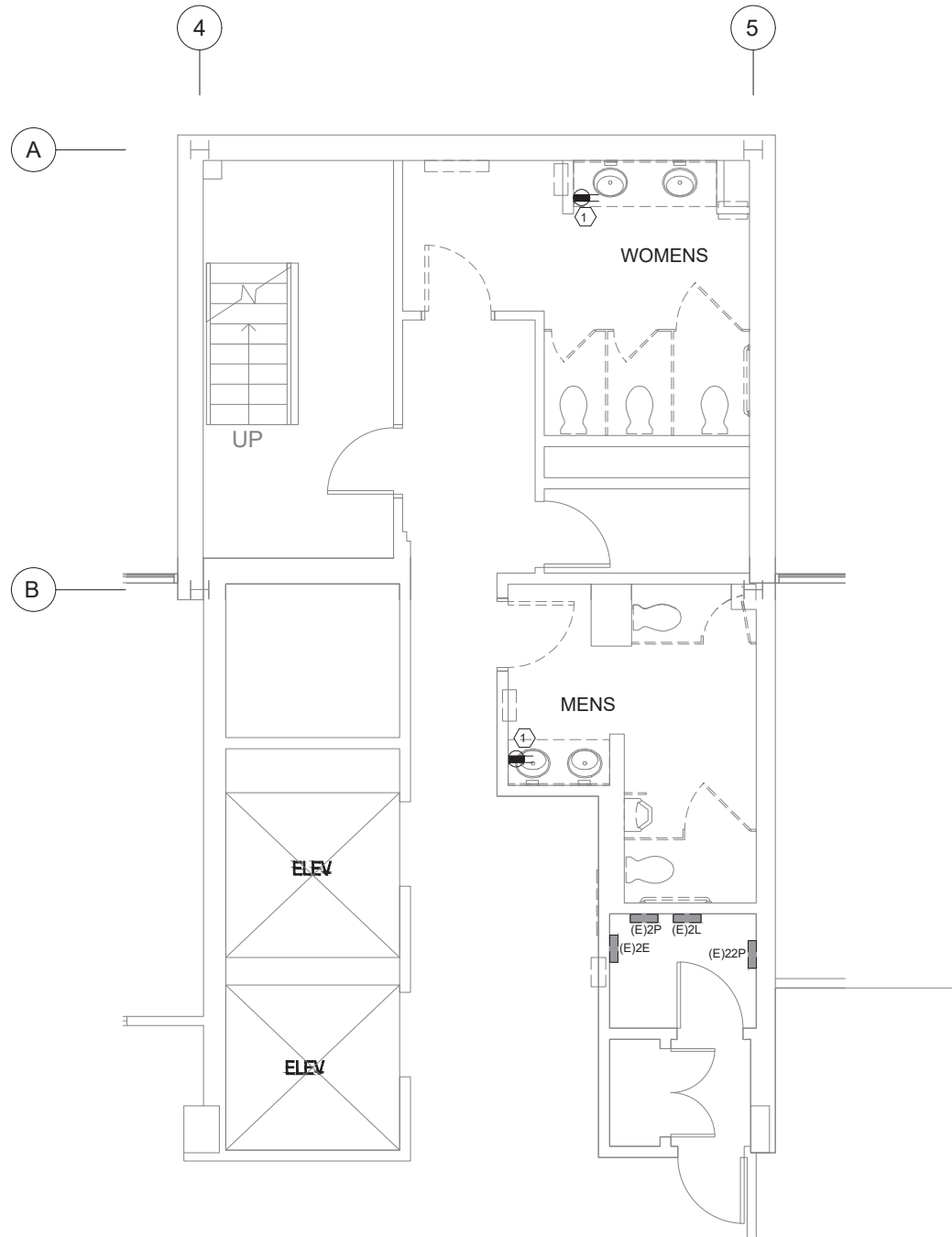
DRAWING SCALE
AS SHOWN

DRAWING FILE NAME
TCC_ELECTRICAL_RESTROOM_PLANS

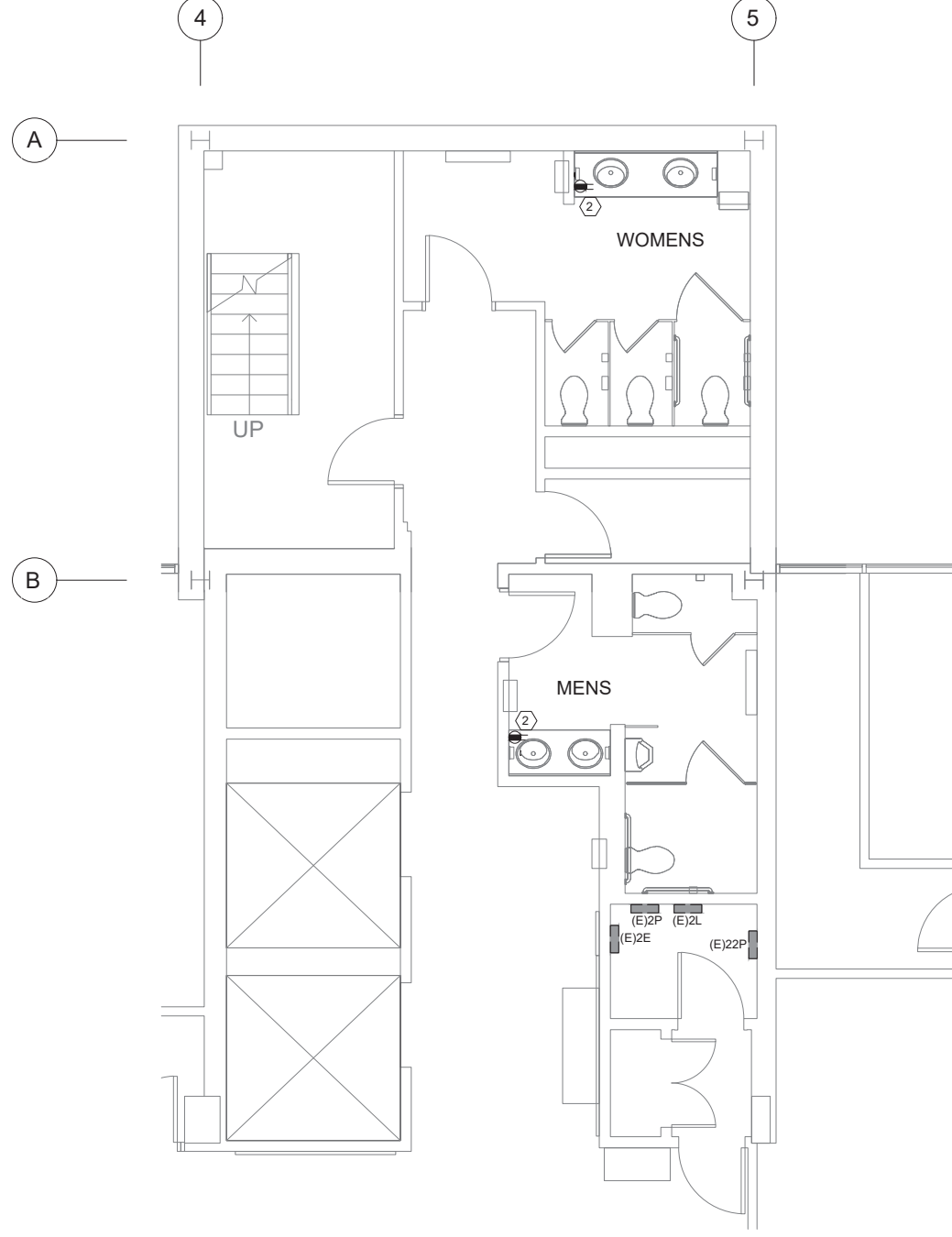
PROJECT NUMBER
165.030307

SHEET NUMBER

E-101



1 POWER PLAN - DEMOLITION
E-102 SCALE: 1/4"=1'-0"



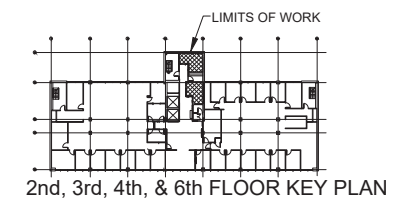
2 POWER PLAN - NEW
E-102 SCALE: 1/4"=1'-0"

GENERAL NOTES:

1. PLAN VIEW SHOWN IS TYPICAL OF FLOORS 2, 3, 4, AND 6. THERE ARE SLIGHT VARIATIONS OF ELECTRICAL ROOM LAYOUT ON EACH FLOOR.

SHEET NOTES: (X)

1. REMOVE FACE PLATE AND RECEPTACLE. RESERVE BOX AND CONDUCTORS FOR RECONNECTION TO NEW RECEPTACLE AND FACE PLATE.
2. PROVIDE NEW GFCI RECEPTACLE AND FACE PLATE AND CONNECT TO EXISTING CIRCUIT. NO NEW LOAD ADDED.



REVISIONS & ADDENDUMS		
#	DATE	REMARKS

MANAGEMENT		SLKB	SLKB	AHW	AHW	4/28/21	4/28/21	4/28/21
DESIGNED	DRAWN	CHECKED	APPROVED	LAST EDIT	PLOT DATE	SUBMITTAL		

CHIEF PETER JOHN TRIBAL BUILDING TANANA CHIEFS CONFERENCE ELECTRICAL POWER PLANS DEMOLITION AND NEW			DRAWING SCALE AS SHOWN
PROJECT NUMBER 165.030307	DRAWING FILE NAME TCC_ELECTRICAL_RESTROOM_PLANS		

SHEET NUMBER
E-102



LIGHTING PLAN - DEMOLITION

SCALE: 1/4"=1'-0"



LIGHTING PLAN - NEW

SCALE: 1/4"=1'-0"



POWER PLAN - DEMOLITION

SCALE: 1/4"=1'-0"



POWER PLAN - NEW

SCALE: 1/4"=1'-0"



SYSTEMS PLAN - DEMOLITION

SCALE: 1/4"=1'-0"



SYSTEMS PLAN - NEW

SCALE: 1/4"=1'-0"

- SHEET NOTES:

1. REMOVE FACE PLATE AND RECEPTACLE. RESERVE BOX AND CONDUCTORS FOR RECONNECTION TO NEW RECEPTACLE AND FACE PLATE.
2. PROVIDE NEW GFCI RECEPTACLE AND FACE PLATE AND CONNECT TO EXISTING CIRCUIT. NO NEW LOAD ADDED.
3. RECONNECT TO EXISTING CIRCUIT. LIGHTING IS LED AND LOAD IS REDUCED. CIRCUIT NUMBER IS UNKNOWN TO ENGINEER VERIFY ON SITE.
4. DEMOLISH ALL LIGHTING IN ROOM. SALVAGE EXISTING CIRCUIT FOR RECONNECTION TO NEW LIGHTING.
5. COORDINATE LOCATION OF HORN/STROBE WITH ALL OTHER DISCIPLINES.

[illegible]

DESIGNED	SLKB
DRAWN	SLKB
CHECKED	AHW
APPROVED	AHW
LAST EDIT	4/28/21
PLOT DATE	4/28/21
SUBMITTAL	04/28/21

CHIEF PETER JOHN TRIBAL BUILDING
TANANA CHIEFS CONFERENCE
6TH FLOOR UNISEX BATHROOM ELECTRICAL PLANS
DEMOLITION AND NEW
PROJECT NUMBROS 104 MINOR ELECTRICAL

DRAWING SCALE
AS SHOWN

DRAWING FILE NAME
TCC ELECTRICAL RESTROOM PLANS

65.030307

SHEET NUMBER

E-104

